

Zoning Map, 2019

Salem, NH

Districts Legend

Residential Districts Chapter 490, Article III

- Residential District (R)
- Rural District (RU)
- Recreational District (REC)
- Garden Apartment R-A District (GA)
- Manufactured Housing Park District (MFG)

Mixed-Use Districts, Chapter 490, Article IV

- Business Office District, Subdistricts I and II (BO-I, BO-II)
- Limited Community Shopping Village (LCSV)
- Town Center District (TC)

Non-Residential Districts, Chapter 490, Article V

- Commercial-Industrial District, Subdistrict A (CI-A)
- Commercial-Industrial District, Subdistrict B (CI-B)
- Commercial-Industrial District, Subdistrict C (CI-C)
- Industrial District (I)

Overlay Districts

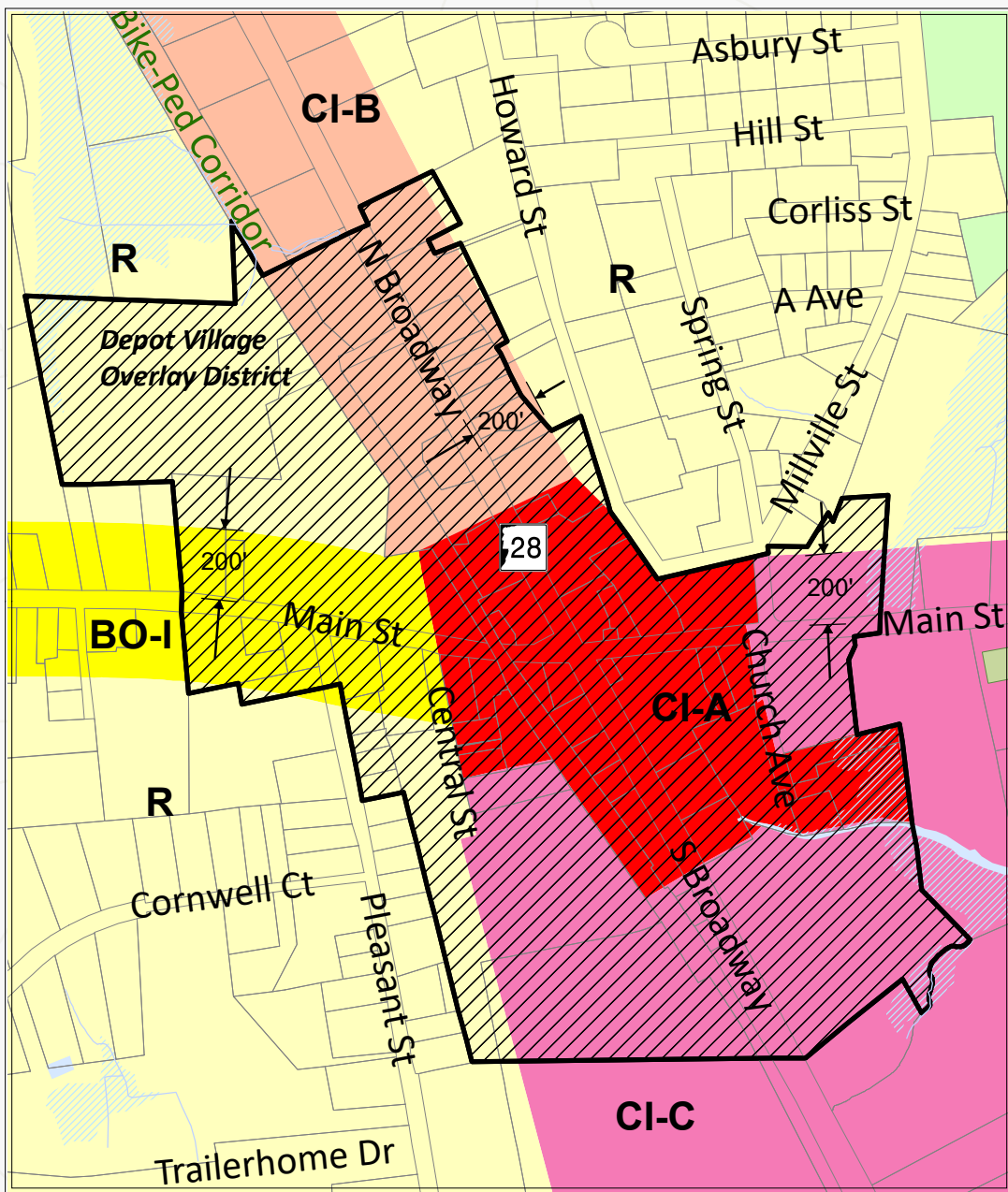
- Business Innovation Overlay District
- Depot Village Overlay

Not Shown: Senior Housing Overlay District;
see Ordinance for applicability

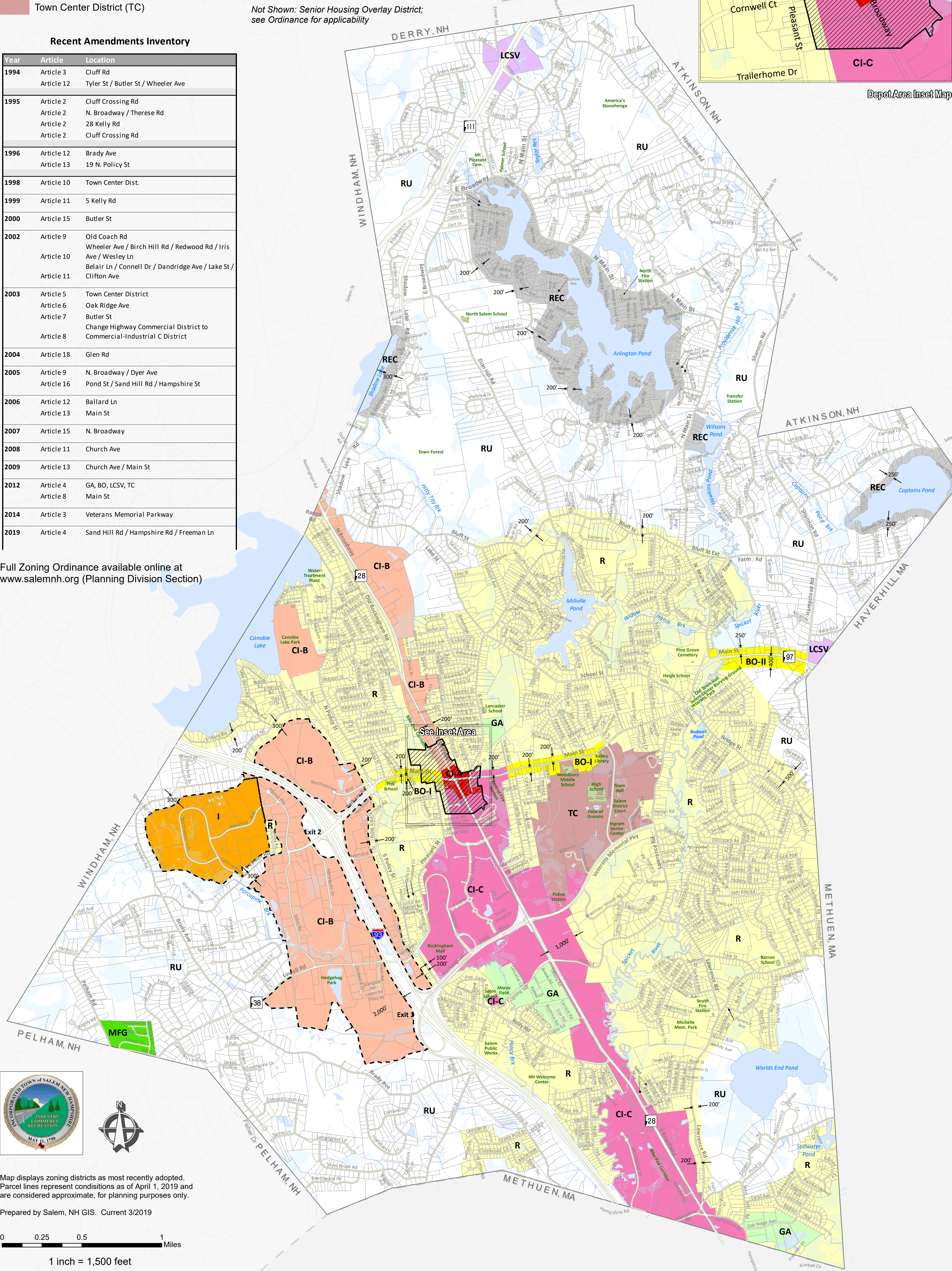
Recent Amendments Inventory

Year	Article	Location
1994	Article 3	Cluff Rd
	Article 12	Tyler St / Butler St / Wheeler Ave
1995	Article 2	Cluff Crossing Rd
	Article 2	N. Broadway / Therese Rd
	Article 2	28 Kelly Rd
	Article 2	Cluff Crossing Rd
1996	Article 12	Brady Ave
	Article 13	19 N. Policy St
1998	Article 10	Town Center Dist.
1999	Article 11	5 Kelly Rd
2000	Article 15	Butler St
2002	Article 9	Old Coach Rd
	Article 10	Wheeler Ave / Birch Hill Rd / Redwood Rd / Iris Ave / Wesley Ln
	Article 10	Belair Ln / Connell Dr / Dandridge Ave / Lake St / Clifton Ave
	Article 11	
2003	Article 5	Town Center District
	Article 6	Oak Ridge Ave
	Article 7	Butler St
	Article 8	Change Highway Commercial District to Commercial-Industrial C District
2004	Article 18	Glen Rd
2005	Article 9	N. Broadway / Dyer Ave
	Article 16	Pond St / Sand Hill Rd / Hampshire St
2006	Article 12	Ballard Ln
	Article 13	Main St
2007	Article 15	N. Broadway
2008	Article 11	Church Ave
2009	Article 13	Church Ave / Main St
2012	Article 4	GA, BO, LCSV, TC
	Article 8	Main St
2014	Article 3	Veterans Memorial Parkway
2019	Article 4	Sand Hill Rd / Hampshire Rd / Freeman Ln

Full Zoning Ordinance available online at www.salemnh.org (Planning Division Section)



Depot Area Inset Map



Map displays zoning districts as most recently adopted.
Parcel lines represent conditions as of April 1, 2019 and are considered approximate, for planning purposes only.

Prepared by Salem, NH GIS. Current 3/2019

0 0.25 0.5 1 Miles
1 inch = 1,500 feet