



SALEM MUNICIPAL SERVICES

ENGINEERING PUBLIC WORKS UTILITIES

MUNICIPAL SERVICES

Combining those relative resources and departments into an organizational structure that consolidates and enhances services that residents of the Town expect to be provided in an appropriate manner via the distribution of their taxes.



SALEM MUNICIPAL SERVICES



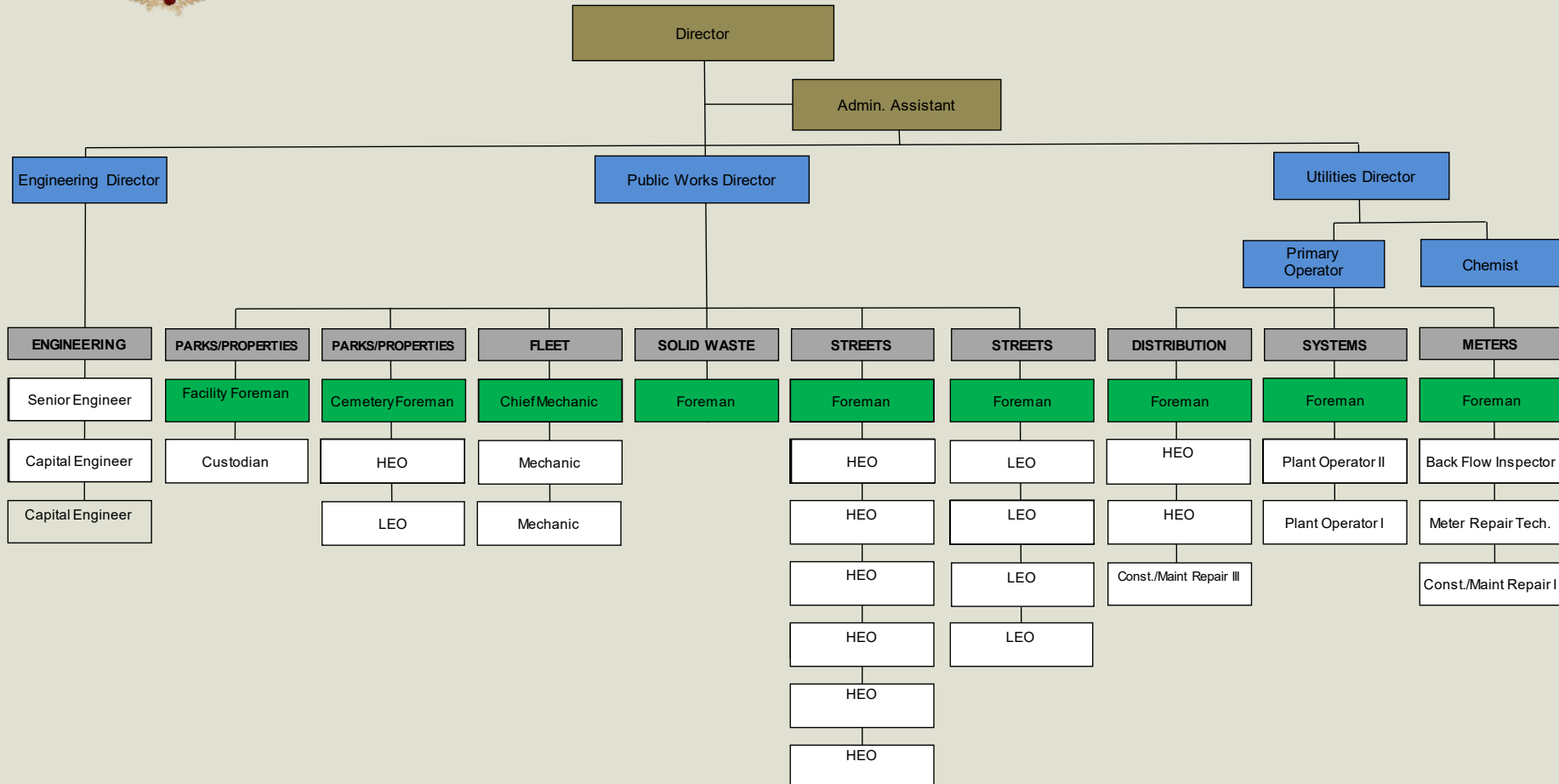
MISSION STATEMENT

To provide high quality essential municipal services to the residents, businesses, and visitors to Salem in a professional, efficient, and cost-effective manner.



SALEM MUNICIPAL SERVICES

ENGINEERING ♦ PUBLIC WORKS ♦ UTILITIES



COMMON OBJECTIVES

- Direction and communication are consistent and collaborative
- Reduces duplication and improves efficiency
- Allows for establishing a dynamic and responsible capital improvement program

PRIMARY OPERATIONS

ENGINEERING



PUBLIC WORKS



UTILITIES

DIRECTION

MISSION STATEMENTS

What is our core purpose and focus, where do we want to go

DESCRIPTIONS

Who are we and what is our responsibility

GOALS

General benchmark; what do we want to achieve for the betterment of the Town

OBJECTIVES

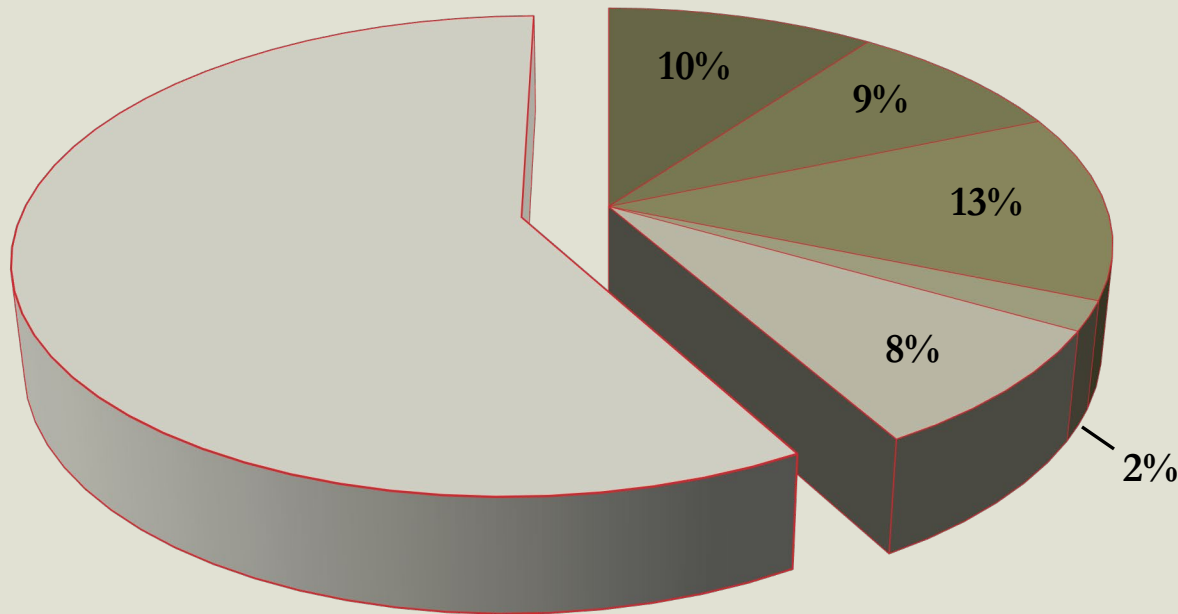
How are we going to reach that goal; specific, timely, and measurable

ASSET MANAGEMENT

- 187 miles of roads
- 34 miles of sidewalks
- 18 municipal bridges
- 136 miles of water pipe
- Canobie Lake WTP
- 3 water tanks
- 3 water booster stations
- 5 Dams
- 1000 plus fire hydrants
- 8500 plus water meters
- 79 miles of sewer pipe
- 75 Traffic Signals
- 10 sewer pump stations
- 1968 plus sewer manholes
- 131 miles of drainpipe
- 5500 plus catch basins
- 600 plus drain manholes
- 750 plus drain outfalls
- 5 cemeteries
- 50 plus acres of property
- 15 Town buildings
- Transfer Station
- 150 plus vehicles and equipment

BUDGET SNAPSHOT

\$28,952,193 - 42% OF OVERALL TOWN BUDGET



■ MUNICIPAL SERVICES

■ WATER

■ SEWER

■ CAPITAL IMPROVEMENTS

■ WARRANT ARTICLES

PROJECTS & PROGRAMS

- Bridge / Culvert Reconstruction
- Road Program
- Water System Improvements – Exit 2
- Old Rockingham Road Water Line
- Sewer Master Plan
- Water Master Plan
- WWTP
- Howard Street Water Tank
- Municipal Separate Storm Sewer System (MS4)
- Vehicle Replacement Plan
- Facility Needs
- Dams
- Grants
- District Court
- Cemetery Expansion
- South Broadway Infrastructure Project
- Depot Intersection Project
- Area Road Improvements
- Ring Roads
- Rail Trail
- Transfer Station
- Regional Water Line
- Old Town Hall
- DPW Operations
- Utility Operations
- Engineering Operations
- Traffic Signals
- Tuscan Village

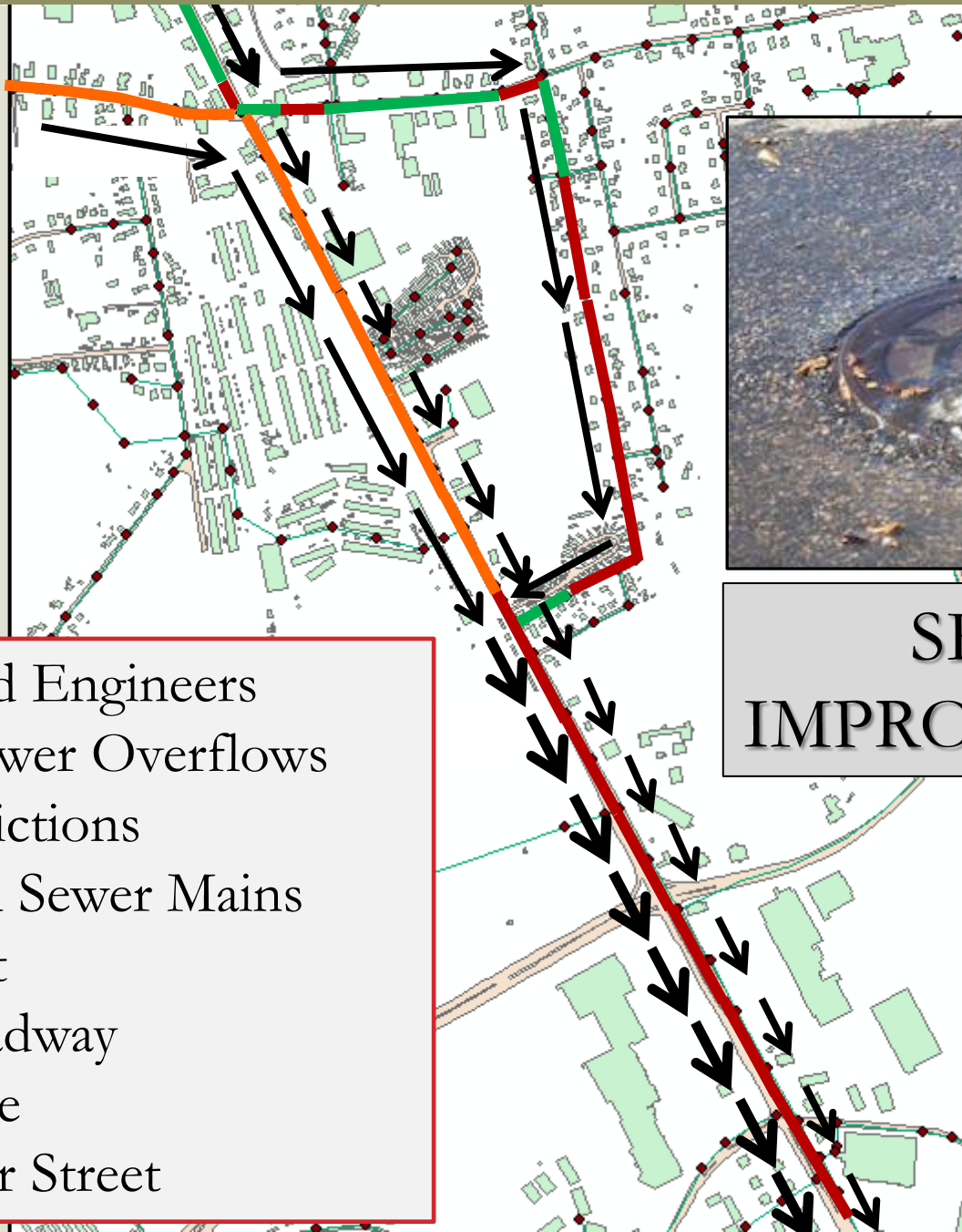
DEPARTMENT DEVELOPMENT

- Strategic Planning
- Master Planning
- Capital Improvement Plan
- Capital Expenditure Plan
- Asset Management
- Technology
- Department Structure

COMMITTEE INVOLVEMENT

- Road Stabilization
- Municipal Buildings Advisory
- Depot Village Advisory
- SNHRW Partners

SOUTH BROADWAY INFRASTRUCTURE PROJECT



SEWER IMPROVEMENTS

- Underwood Engineers
- Sanitary Sewer Overflows
- Flow Restrictions
- Undersized Sewer Mains
- Main Street
- South Broadway
- Granite Ave
- Westchester Street

SOUTH BROADWAY INFRASTRUCTURE PROJECT

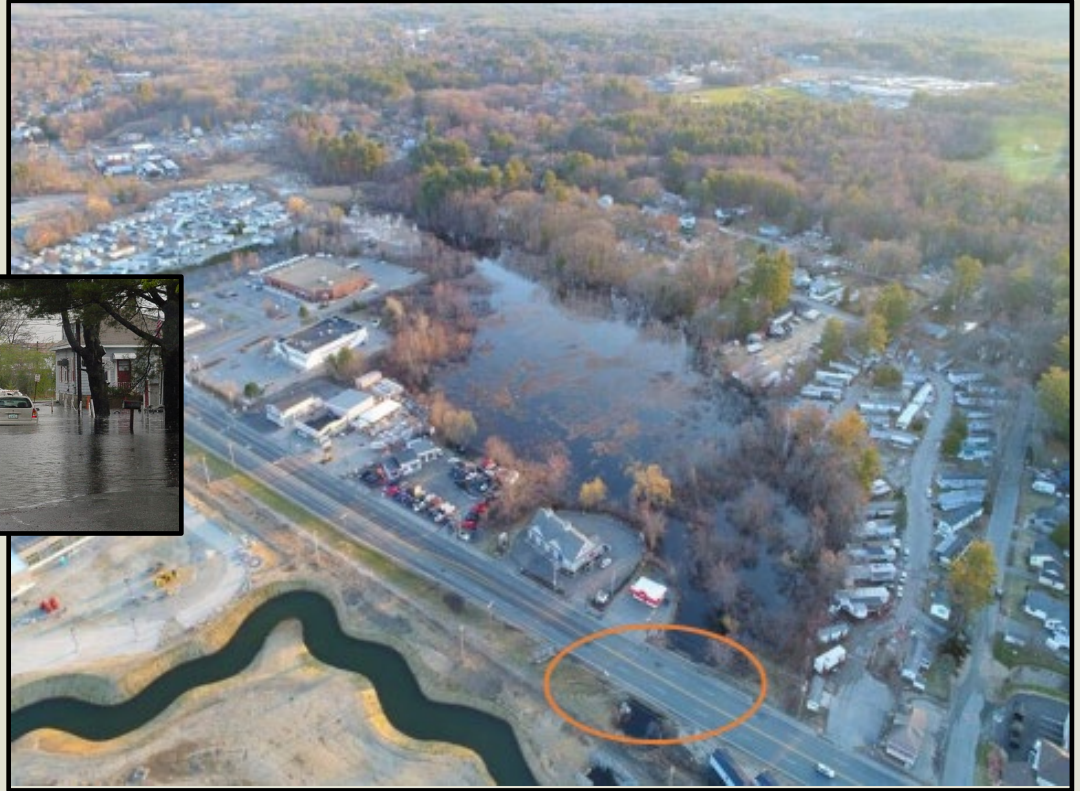
- CDM Smith
- Master Plan
- 2016 Pipe Integrity Study: Redlined
- Depot and South Broadway
- Pipe – 100 years old
- Over 25 Breaks since 1987



WATER IMPROVEMENTS

SOUTH BROADWAY INFRASTRUCTURE PROJECT

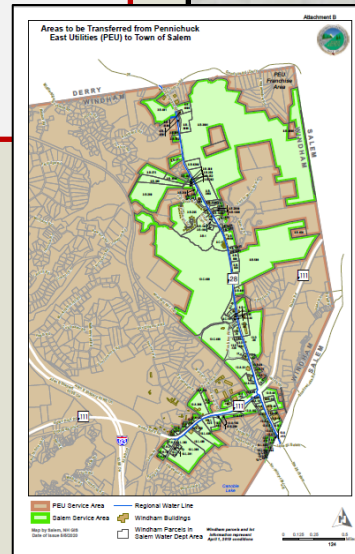
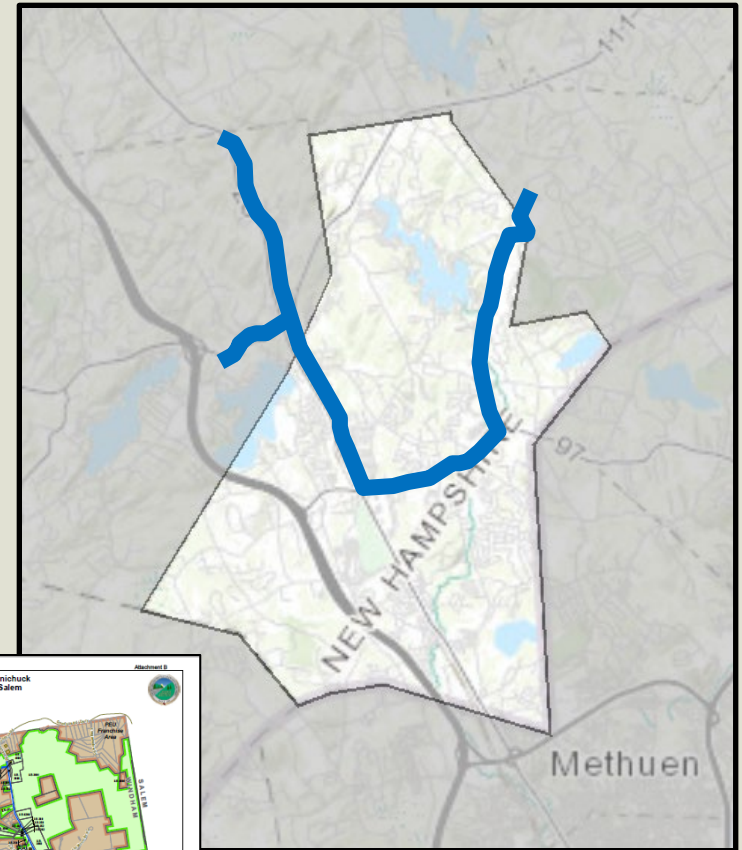
- Underwood Engineers
- Hoyle & Tanner
- Flow Restrictions
- Undersized Culvert
- Main Street
- South Broadway
- Granite Ave
- Westchester Street



CULVERT IMPROVEMENTS

SOUTHERN NH REGIONAL WATER LINE

- Address MtBE contamination issues – Plaistow, Salem, and Windham
- Construction funded by NHDES - ~\$27,000,000
- Salem Work Complete
- Windham Franchise Area
- Phase I – 300,00 GPD
- Phase II – 1,200,000 GPD

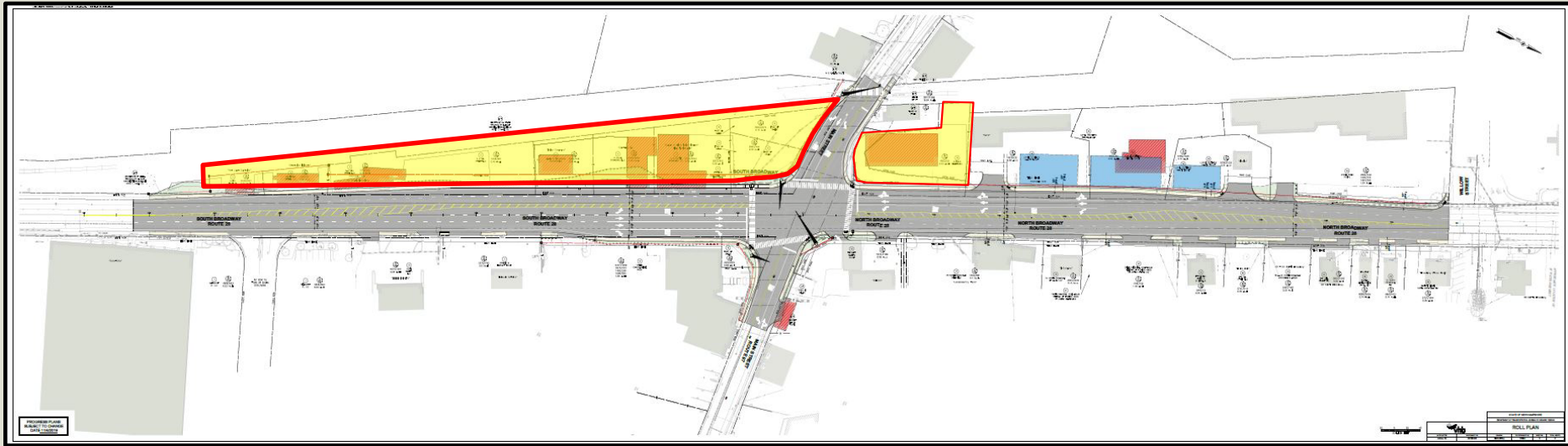


SOUTHERN NH REGIONAL WATER LINE INTERCONNECTION AGREEMENT

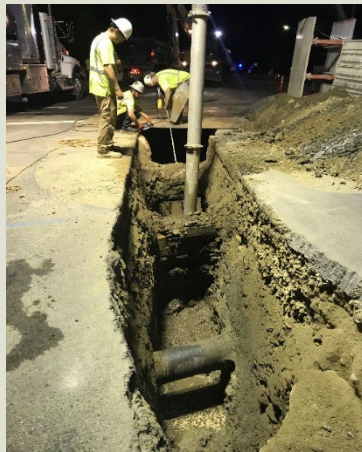
Water System	Phase 1 Max. Day Demand (MGD)	Phase 2 Max. Day Demand (MGD)	Total Max. Day Demand (MGD)
Windham	200,000	110,000	310,000
Salem	300,000	1,200,000	1,500,000
HAWC	250,000	500,000	750,000
Plaistow	250,000	320,000	570,000
TOTAL	1,000,000	2,130,000	3,130,000

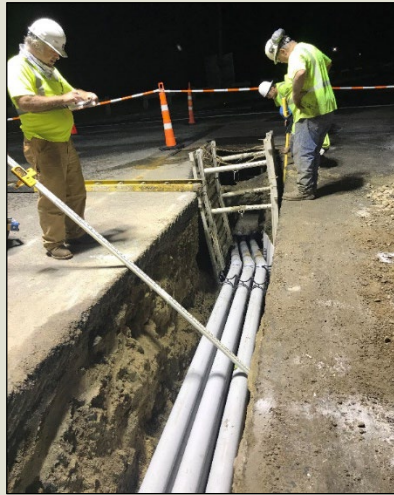
ROAD PROJECTS

- High Level of Congestion and Delay
 - Highest Crash Rate in Salem
 - Rte28 Shared Thru/Left Turn Lanes
 - Overlapping Left Turns Lead to Risk Taking
 - 35 Curb Cuts on Route 28
 - 220 Crashes in 3 Year Period
- Seven properties acquired
 - Widen Route 28 to include exclusive left turn lanes and striped median
 - Replace traffic signals
 - Rehabilitate roadway pavement and reconstruct sidewalks
 - Signalize the future rail trail crossing of Main Street



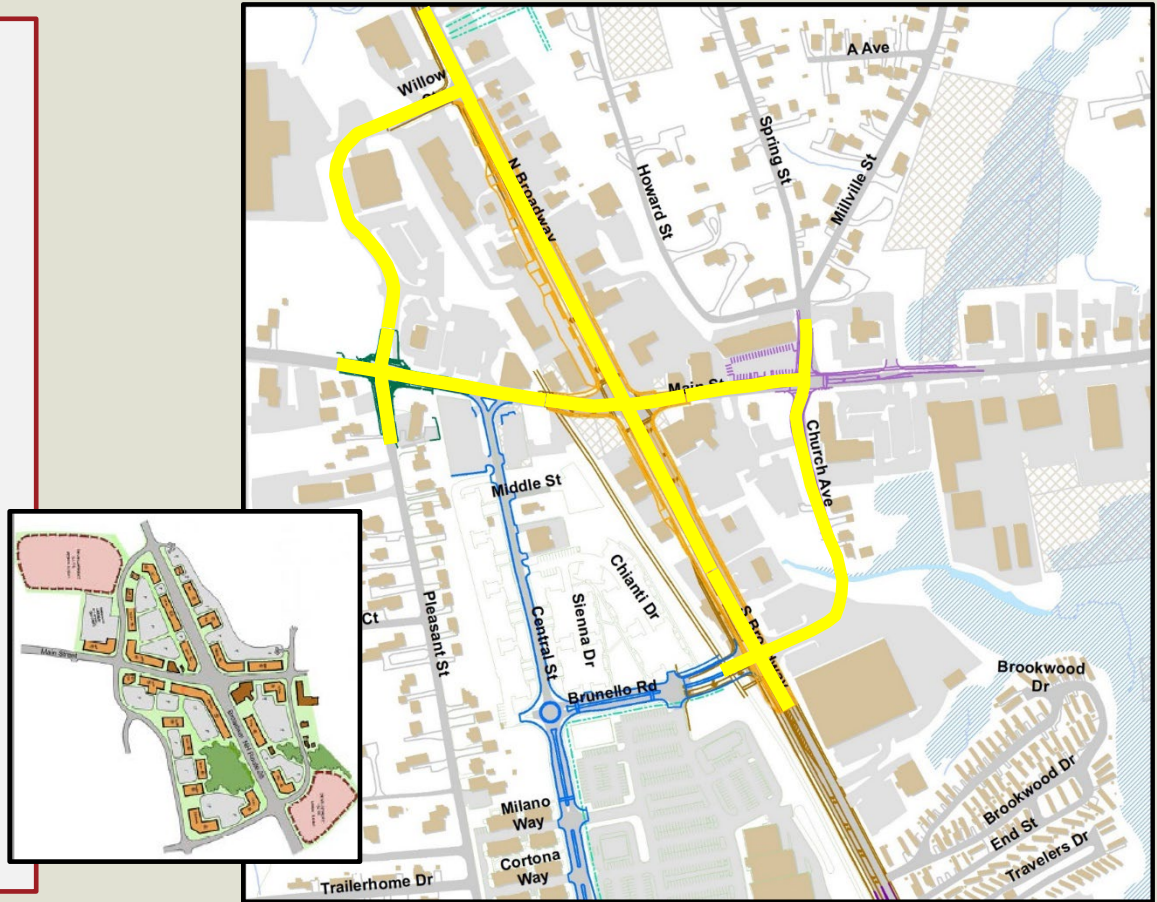
DEPOT INTERSECTION





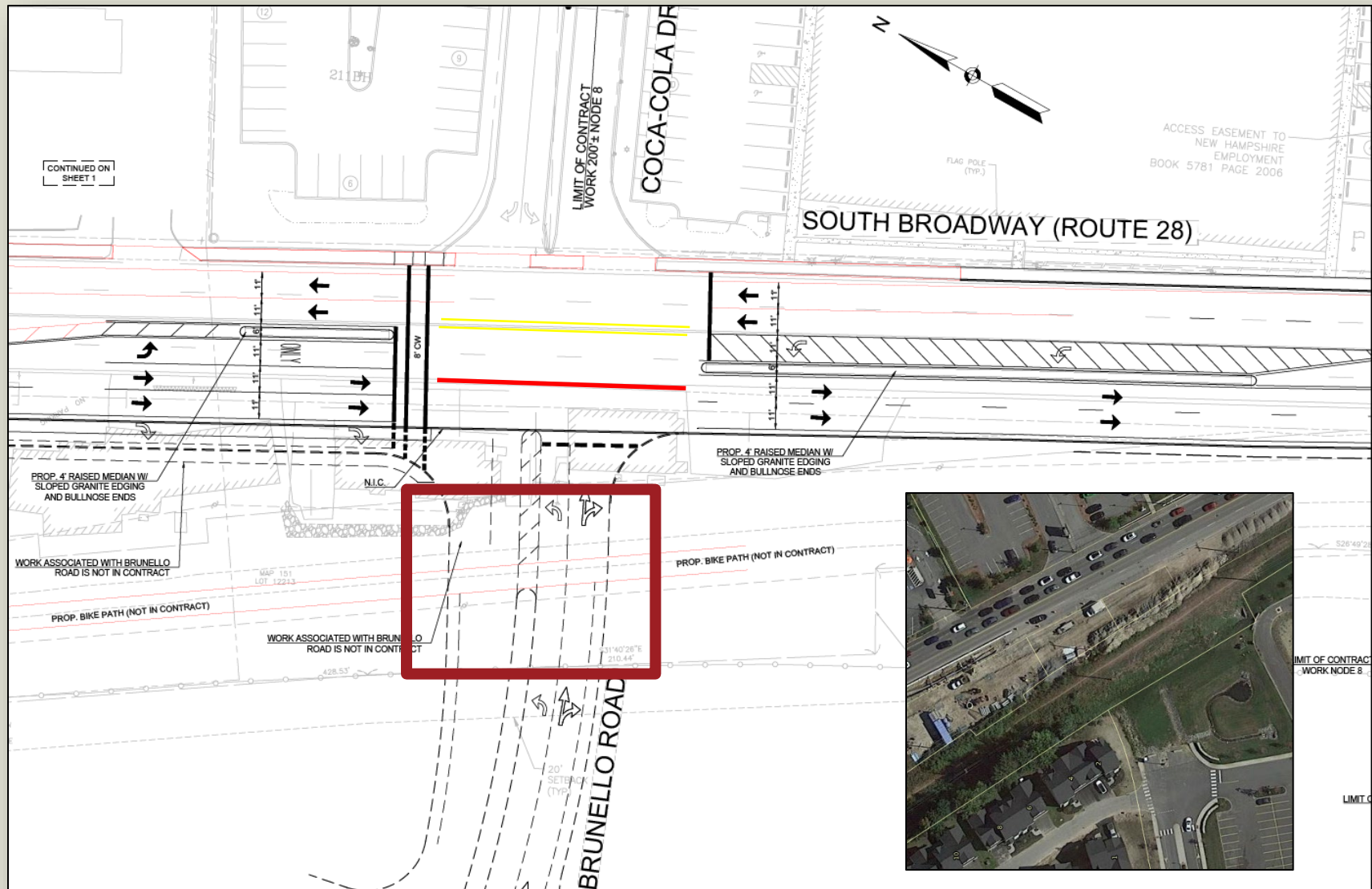
ROAD PROJECTS

- 2011 Depot Master Plan
- Pleasant/Main
- Depot Intersection (Broadway/Main)
- Northwest Ring Road (Willow Street)
- Southeast Ring Road (Church Avenue)
- Broadway Gaps



AREA ROAD IMPROVEMENTS

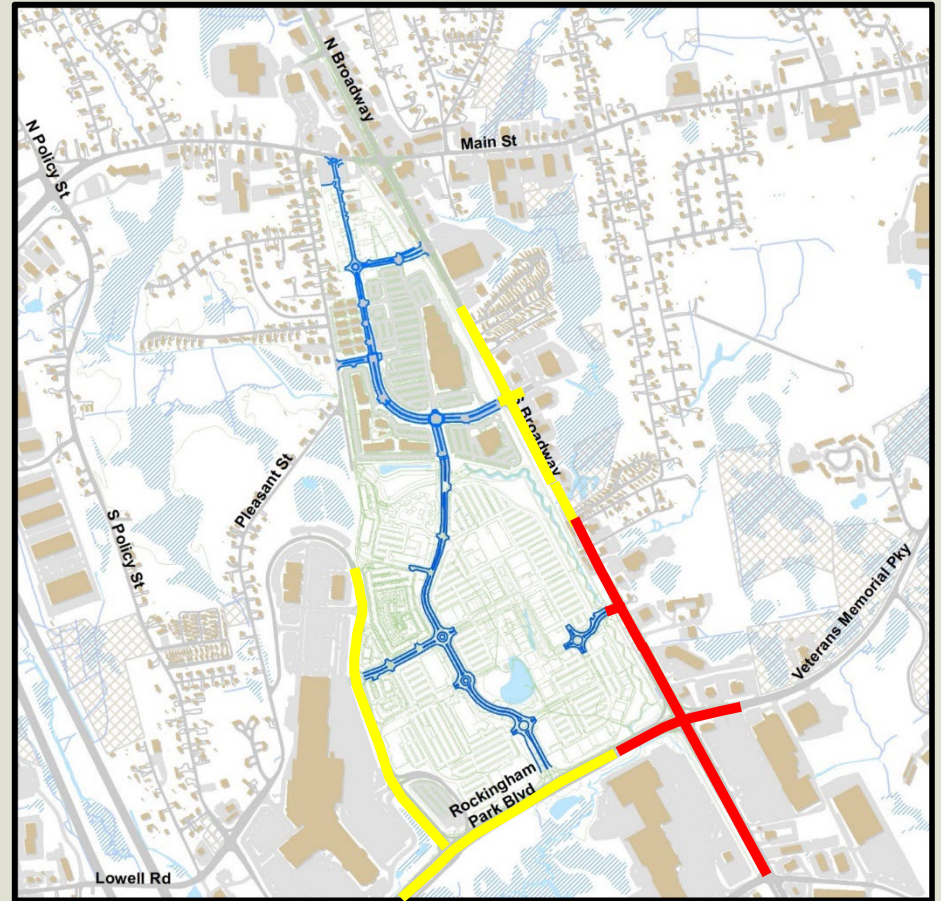
ROAD PROJECTS



BRUNELLO ROAD INTERSECTION / S. BROADWAY WIDENING

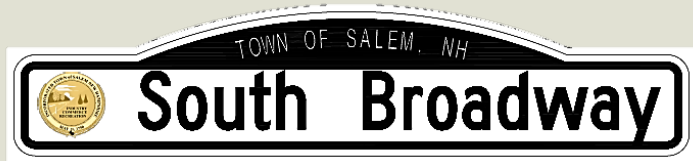
ROAD PROJECTS

- Mall Road
- Rockingham Park Boulevard
- Broadway/RPB/Veterans
- Broadway/ Via Toscana
- Broadway/Central St/
Post Office
- Broadway Gaps

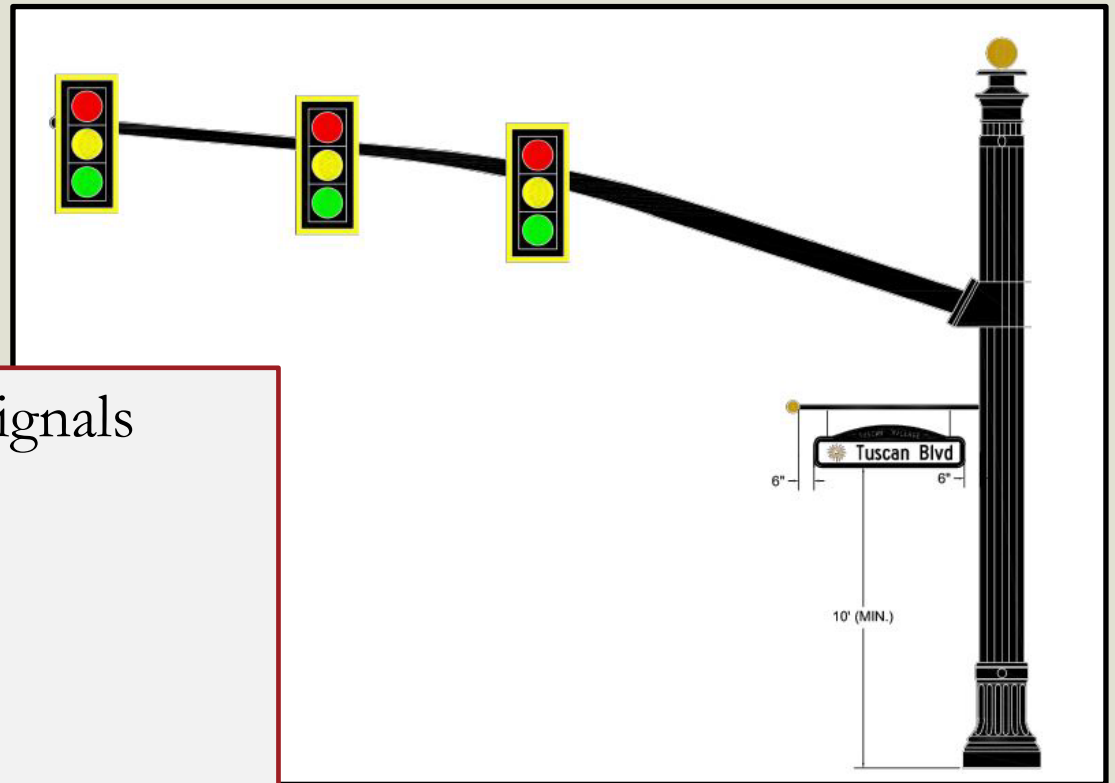


AREA ROAD IMPROVEMENTS BY TUSCAN

ROAD PROJECTS



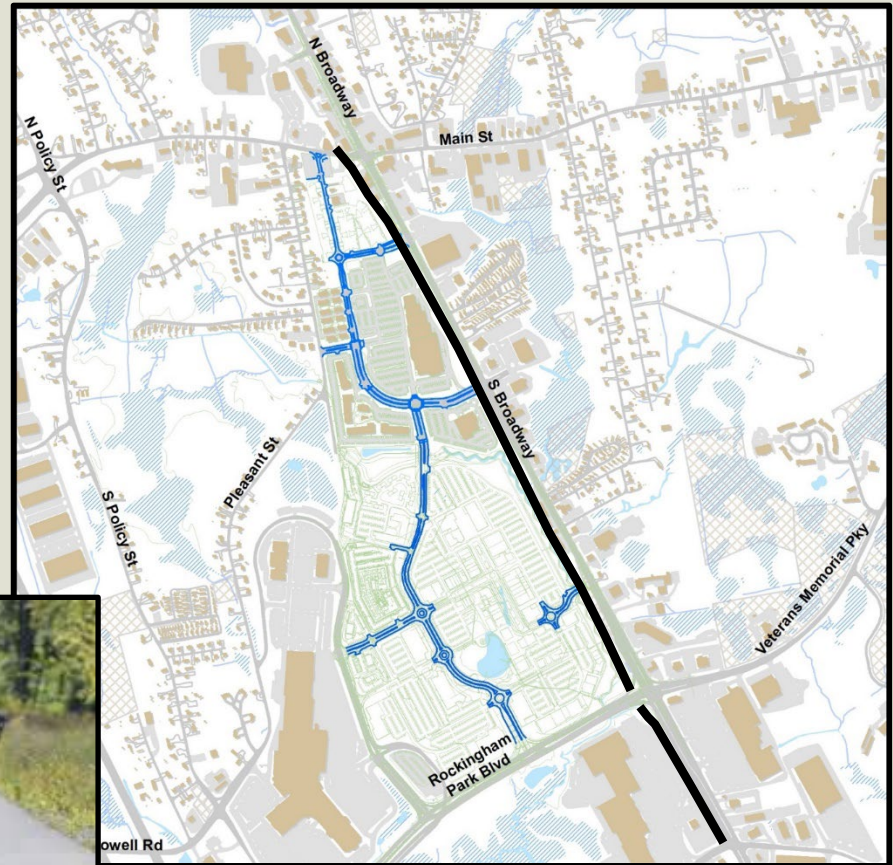
- Ornamental Traffic Signals
- Interconnection
- Granite Curbing
- Concrete Sidewalks
- Signing Theme
- Lighting



STREETSCAPE

RAIL TRAIL IMPROVEMENTS

- Phases 1-3: Windham TL to Main Street (Constructed)
- Phases 4-6: Main St to Cluff Crossing (in Design)
- Future Phases to State Line





RT 28 INFRASTRUCTURE PROJECT LIMITS

TARGET

2023 ROAD PROGRAM

TUSCAN VILLAGE IMPROVEMENTS – 2023

TUSCAN VILLAGE IMPROVEMENTS – 2016, 2020

BRUNELLO ROAD- 2024

RAIL TRAIL 2023/24

MAIN/PLEASANT 2024

DEPOT 2020 - 2022

MILLVILLE ST

WILLOW ST INT

RT 28 / DEPOT
1.5 MILE STRETCH
25,000 – 30,000 Cars per day

DYNAMIC CAPITAL IMPROVEMENTS



WEST DUSTON ROAD NEIGHBORHOOD IMPROVEMENTS

- Water
- Sewer
- Drainage
- Road Reconstruction

FORMER WASTEWATER TREATMENT FACILITY

2016



FORMER WASTEWATER TREATMENT FACILITY

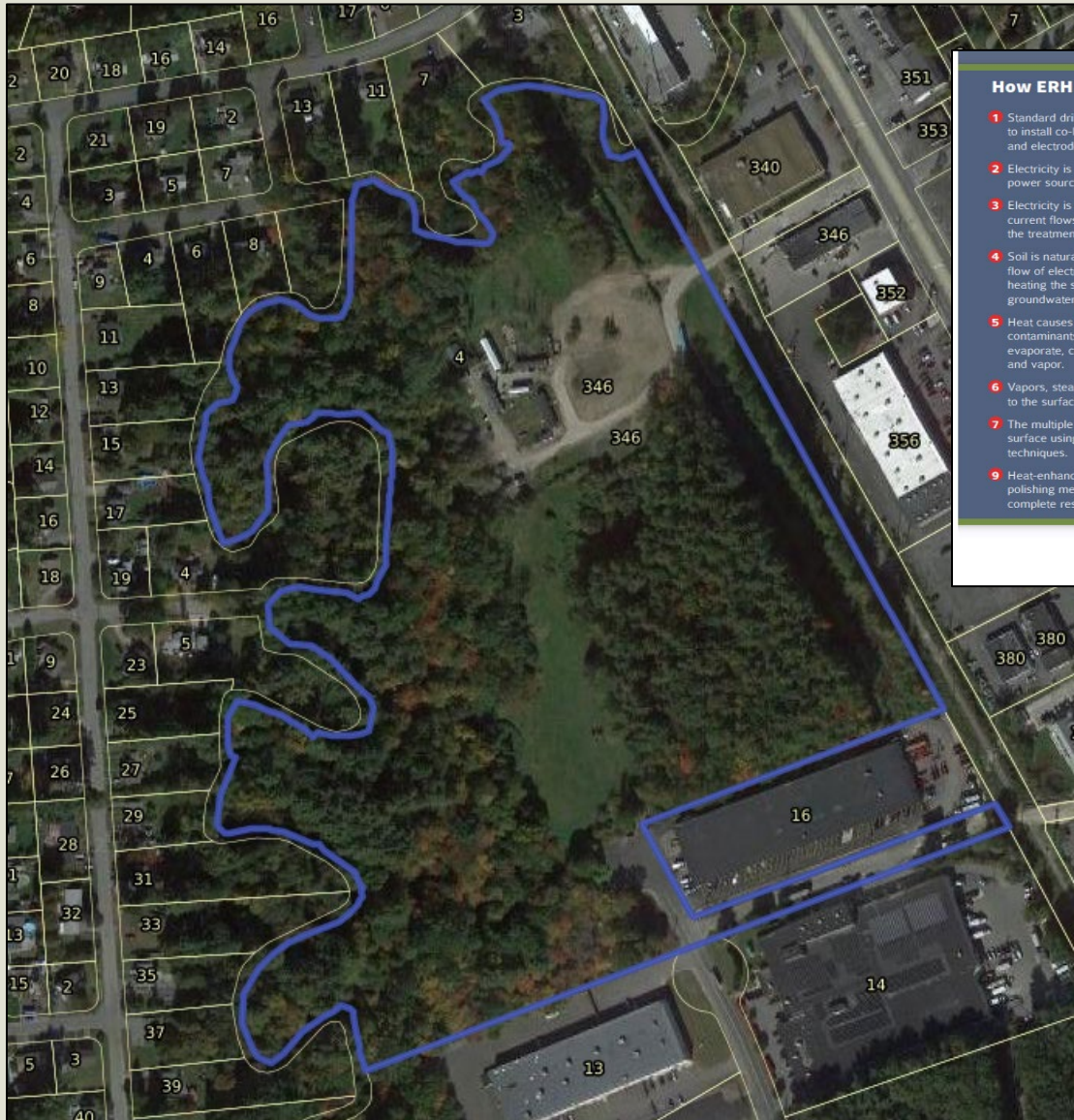
2021



FORMER WASTEWATER TREATMENT FACILITY

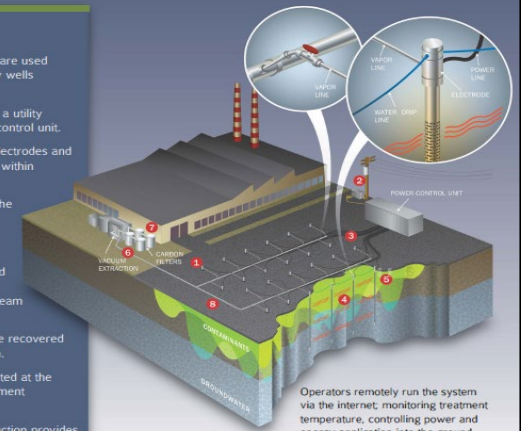


FORMER WASTEWATER TREATMENT FACILITY



How ERH Works:

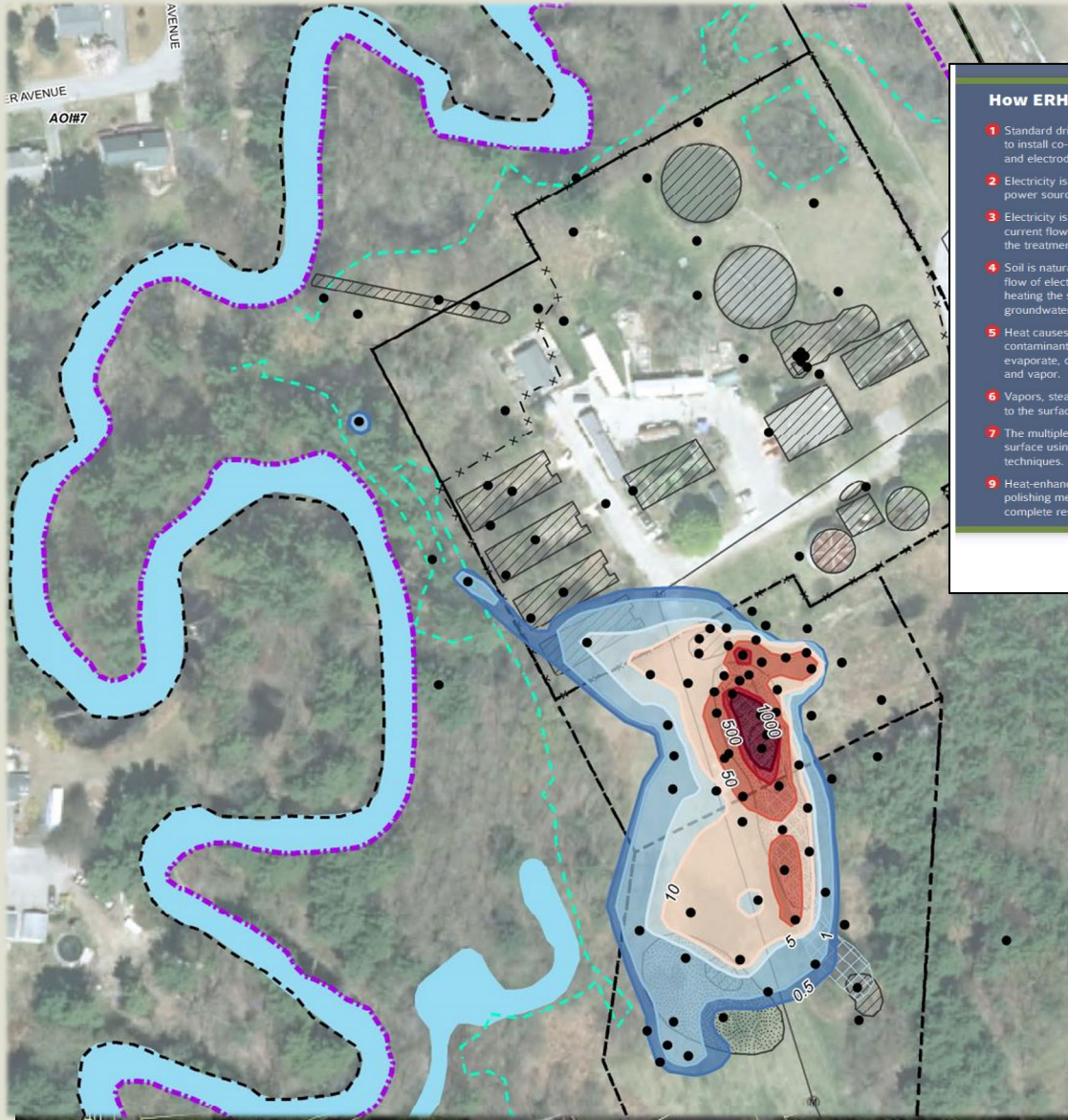
- 1 Standard drilling techniques are used to install co-located recovery wells and electrodes.
- 2 Electricity is connected from a utility power source to the power control unit.
- 3 Electricity is applied to the electrodes and current flows between them within the treatment volume.
- 4 Soil is naturally resistant to the flow of electrical current, heating the soil and groundwater.
- 5 Heat causes the underground contaminants and water to evaporate, creating in situ steam and vapor.
- 6 Vapors, steam and NAPL are recovered to the surface under vacuum.
- 7 The multiple phases are treated at the surface using standard treatment techniques.
- 8 Heat-enhanced in situ destruction provides polishing mechanisms long after ERH is complete resulting in no rebound.



TRS
TRIS Group, Inc.
Accelerating Value

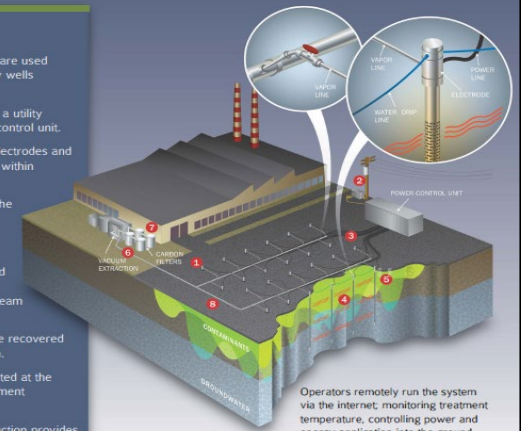


FORMER WASTEWATER TREATMENT FACILITY



How ERH Works:

- 1 Standard drilling techniques are used to install co-located recovery wells and electrodes.
- 2 Electricity is connected from a utility power source to the power control unit.
- 3 Electricity is applied to the electrodes and current flows between them within the treatment volume.
- 4 Soil is naturally resistant to the flow of electrical current, heating the soil and groundwater.
- 5 Heat causes the underground contaminants and water to evaporate, creating in situ steam and vapor.
- 6 Vapors, steam and NAPL are recovered to the surface under vacuum.
- 7 The multiple phases are treated at the surface using standard treatment techniques.
- 8 Heat-enhanced in situ destruction provides polishing mechanisms long after ERH is complete resulting in no rebound.



Operators remotely run the system via the internet, monitoring treatment temperature, controlling power and energy application into the ground.



TRS
TRS Group, Inc.
Accelerating Value



OLD TOWN HALL PRESERVATION PROJECT

- New Hampshire Preservation Alliance: \$3,587.50
Historic Building Assessment
- LCHIP: \$46,640.00
Window Restoration



SALEM HISTORICAL SOCIETY FUNDRAISING

- *Siding Replacement*
- *Painting*
- *Interior Carpentry*
- *Electrical*
- *Walkway*
- *Landscape*
- *Various Masonry Repairs*



LCHIP
Land & Community Heritage
Investment Program



OLD TOWN HALL PROJECT

PROJECT DESCRIPTION:

The purpose of the project described herein is to protect and enhance the historic character and preservation values of the 1738 Salem Old Town Hall (the "Resource") located at 310 Main St, Salem, NH 03075, by undertaking the following work: *Window Restoration*

Recipient:

Project Manager:

Project Name:

Project Type:

Grant Award:

Grant Expiration Date:

Town of Salem

Municipal Services Department

Salem Old Town Hall

Rehabilitation

up to \$46,640.00

December 31, 2023

MUNICIPAL BUILDINGS ADVISORY COMMITTEE

M



- Window Restoration On-Going, LCHIP Grant
- Siding Replacement Complete

B



- ICON – Finalizing Building Program and
- Setting date for Conceptual Deliverables to BOS

A



- RFQ 2022-037 – Facility Assessment

C



- Weston and Sampson – Finalizing Feasibility Study
- Next Steps - Due Diligence Structural Building Evaluation, Site Geotechnical



- MBAC reviewed and discussed August 2019 Harriman Report
- Police Internal Working Group reviewed locations and building size



- MBAC reviewed and discussed Harriman and HL Turner Reports
 - Fire Internal Working Group developed Facilities Plan
-

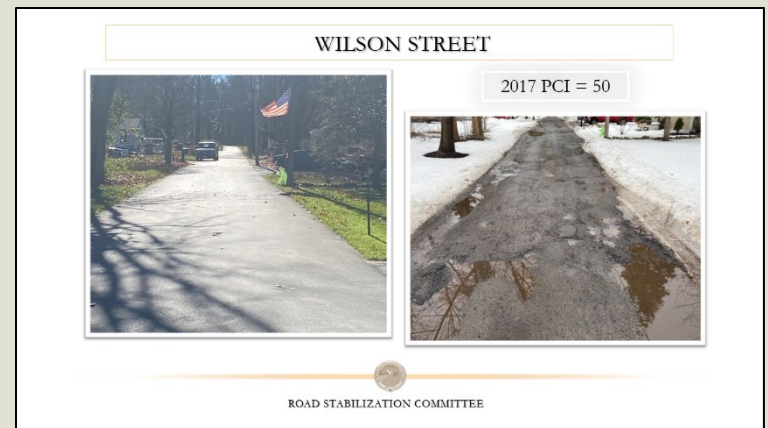
ENGINEERING DIVISION



ROAD PROGRAM

The largest and perhaps most important asset of municipal infrastructure are the roads. Simply put paved roads are used as a primary mode of transportation and preserving the condition should be a top priority. Municipalities are best served implementing a Pavement Management Plan that uses geographic information system technology to measure and evaluate the road conditions creating comprehensive data. This process allows a municipality to maximize its reinvestment in a feasible manner while maintaining a sound road network.

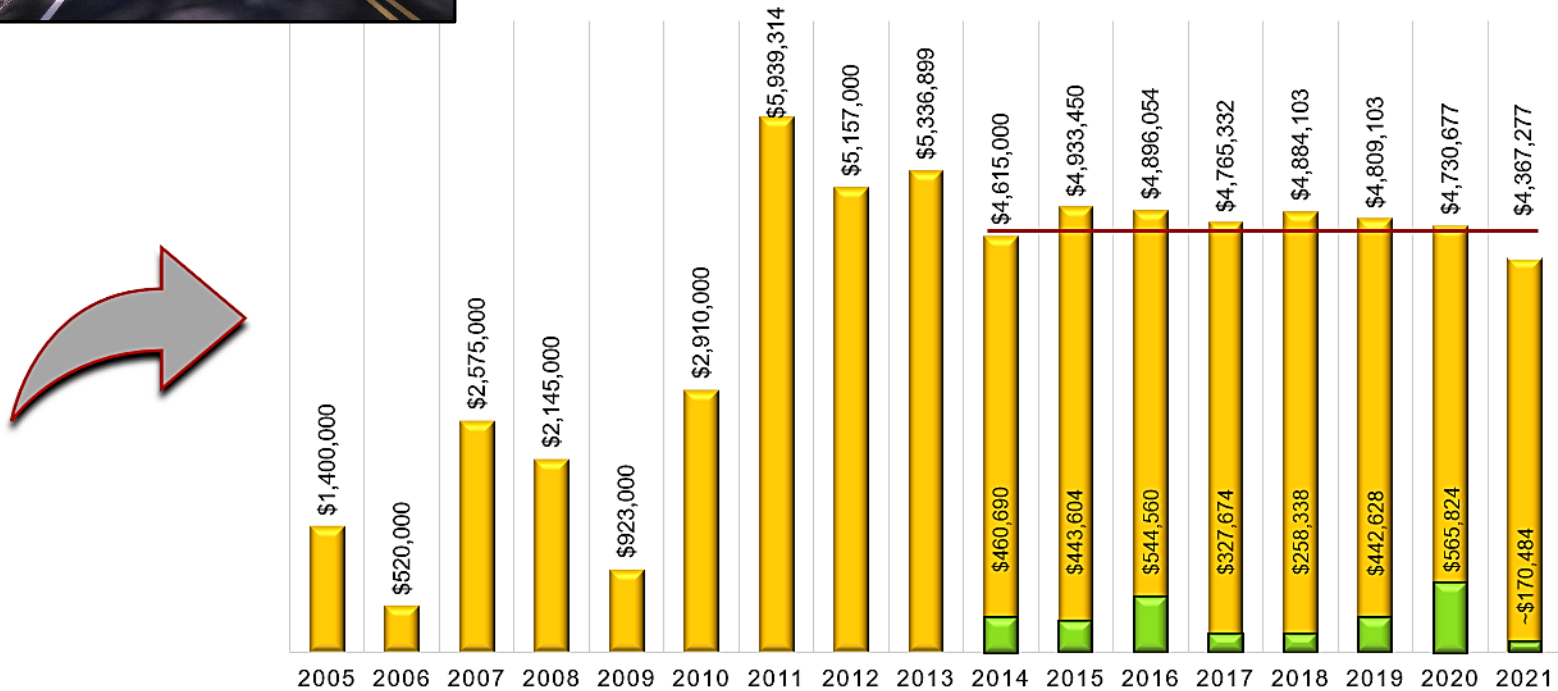
- Pavement Condition Index (PCI)
- PCI derived from established measurements of pavement surface condition distresses and deficiencies
- 0 to 100 scale, 100 being excellent
- PCI is one of the principal factors in treatment and scheduling
- Town wide assessment underway in 2022
- Report to BOS in early 2023



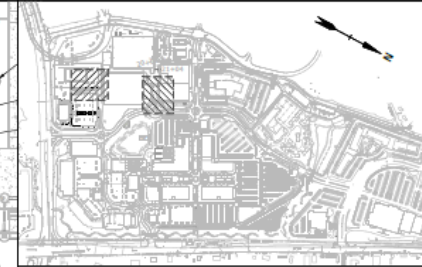
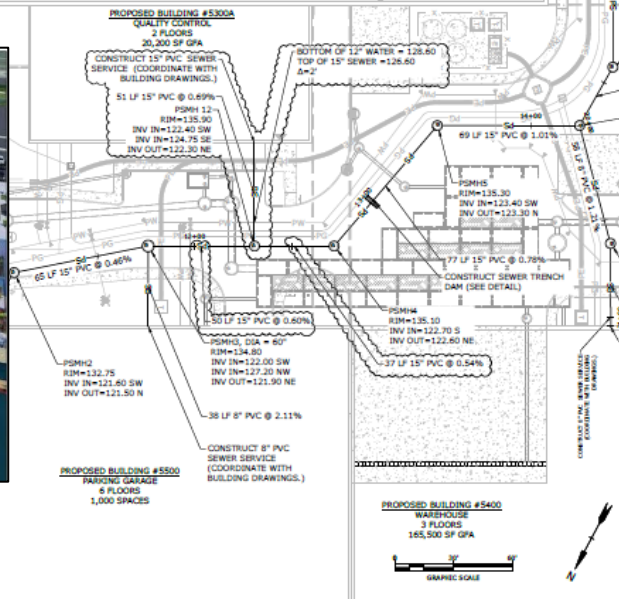
ROAD PROGRAM



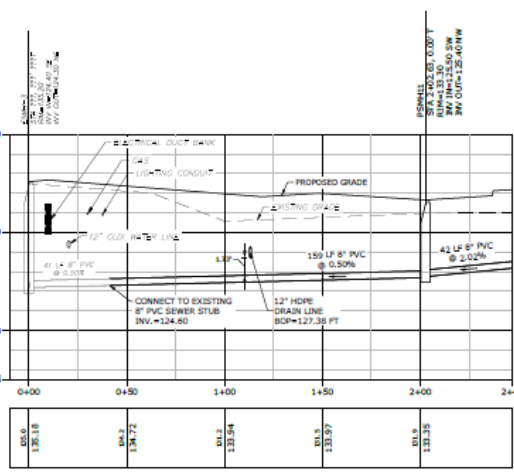
HISTORICAL FUNDING



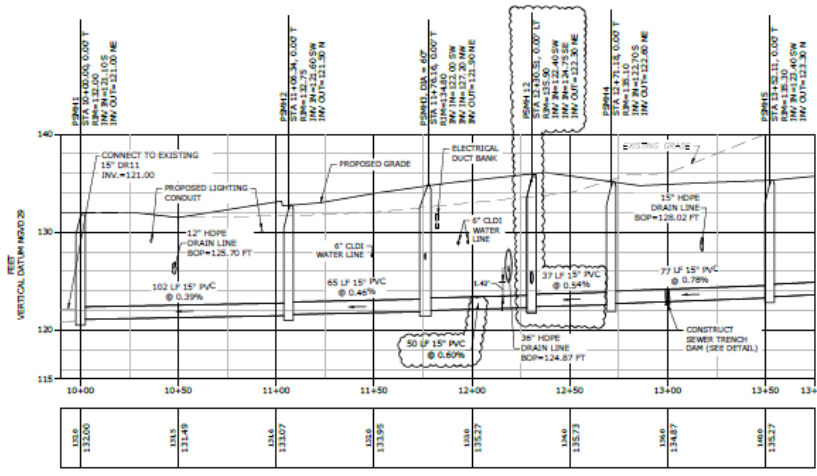
PLAN REVIEW



KEY PLAN
SCALE: 1" = 600'



SEWER SERVICE PROFILE 1



SEWER SERVICE PROFILE 2

- | LEGEND | |
|--------|---------------------------------------|
| | PROPOSED DRAIN LINE |
| | PROPOSED GAS MAIN |
| | PROPOSED SEWER LINE |
| | PROPOSED CONC. ENCASED ELEC. DUCTBANK |
| | PROPOSED LIGHTING CONDUIT |
| | PROPOSED WATER LINE |
| | PROPOSED TELECOMMUNICATIONS LINE |
| | PROPOSED PERFORATED UNDERDRAIN |
| | PROPOSED SEWER MANHOLE |
| | BOTTOM OF FIRE |
| | INVERT |
| | STATION |
| | PROPOSED SEWER MANHOLE |
| | DIAMETER |

PERMIT SET - NOT FOR CONSTRUCTION

1	07/12/2022	REVISED PER WHDES COMMENTS
MARK	DATE	DESCRIPTION

SEWER PLAN & PROFILE

**TUSCAN VILLAGE - LIFE SCIENCE CAMPUS
SEWER CONNECTION PLANS**
TUSCAN VILLAGE MASTER DEVELOPMENT, LLC
4-10 ARTISAN DRIVE & 14-28 TUSCAN BOULEVARD
SALEM NH, 03079
MAP 107 LOT 12605

Tighe&Bond

SCALE: AS SHOWN

DATE: JUNE 10, 2022

ZONE: COMMERCIAL - INDUSTRIAL 'C'			POLYMER FLOORING		
PROJECT NO:	FILE:	DRAWN BY:	CHECKED:	APPROVED:	SHEET:
M1775-007	M1775-007_SCP UTIL.dwg	KHF	AFS	IMP	C-501

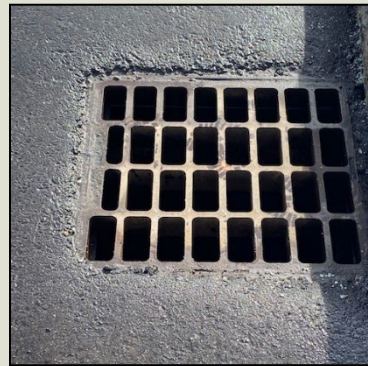


STORMWATER – MS4

MS4 is short for Municipal Separate Storm Sewer System. The Town must follow Federal Guidelines for the stormwater or drainage system. This system is a collection of structures, including retention basins, ditches, roadside inlets, and underground pipes, designed to gather stormwater from built-up areas and discharge it, without treatment, into local streams and rivers.

Management and Controls

- Illicit Discharges
- LID Site Planning and Design
- BMP Design Guidance
- Retention/Treatment Requirements
- As-Builts/Long-Term O&M
- Phosphorus/Chloride/Metals Impairments
- Drinking Water Supply Sources



- 4,967 Catch Basins
- 741 Drain Manholes
- 1,101 Outfalls
- 465 Culverts
- 85 miles of Drainage Pipe

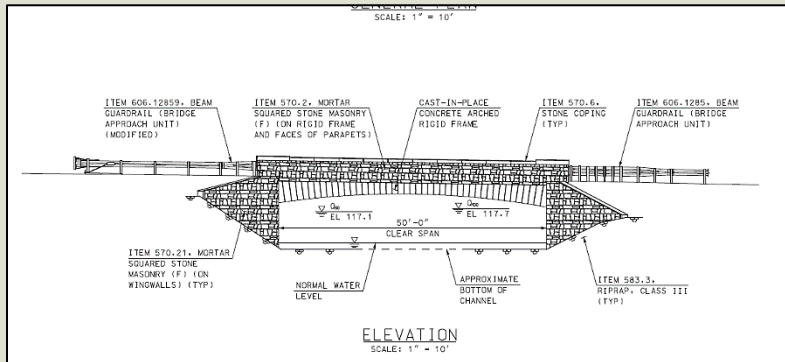
BRIDGES



Town Farm Road Bridge

NHDOT BRIDGE PROGRAM

The State Bridge Aid program under RSA 234 provides that funding for construction or reconstruction of municipally owned bridges shall be borne 80% by the state and 20% by the municipality, subject to the available level of funding each year.



Bridge Street Bridge

- Program Red List
- Historic District
- Engineering Complete
- Bid 2021
- Rebid once funds are available

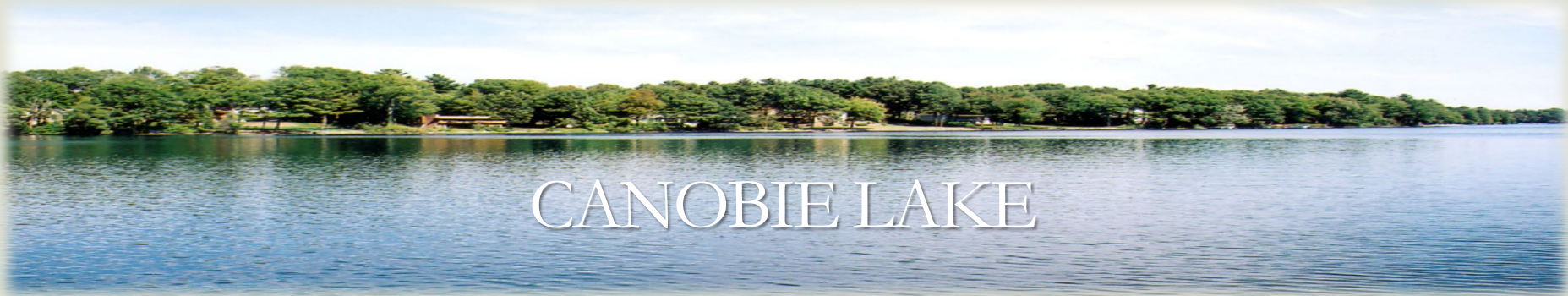
2016	Town Farm Road
2010	Lawrence Road
2008	Haverhill Road
2013	Providence Hill Road
2010	Emerson Road
2014	Teague Road
2010	Cluff Crossing Road
2010	North Main Street
2009	Pelham Road
2011	South Policy Street
2013	Bluff Street
2014	Shannon Road
2017	Braemor Woods
2019	Bluff Street Extension
2020	RT 28 (Friendship Drive)
2019	Pleasant Street Box

UTILITIES DIVISION



DISTRIBUTION ♦ SYSTEMS ♦ METERS

WATER SUPPLY SOURCES – RESERVOIRS



CANOBIE LAKE



ARLINGTON POND



LAKE MASSABESIC

Emergency interconnection with Methuen

WATER DEMAND

REGIONAL LINE

2020 - 2022: .5 MGD

CANOBIE LAKE

MAY 1 – OCTOBER 10

1999-2020: 2.82 MGD

ARLINGTON POND

OCTOBER 11 – APRIL 30

1999-2020: 1.94 MGD

WATER TREATMENT



The plant, which has been maintained in operations since 1995, utilizes a Trident Microfloc® upflow clarification treatment system and was designed with three 2-mgd modules for a peak treatment flow rate of 6.0 mgd. The “firm capacity” (the capacity with the largest unit out of service) is 4 mgd. The disinfection used is Chloramines.

WATER SYSTEM



This Water System services over 8,400 homes and businesses in Salem. Over 2.4 million gallons of drinking water per day, on average, flow from the water treatment plant and is distributed through the town in its vast network of pipes. The infrastructure must be always operative as it serves potable water to a significant portion of the town and provides water for public safety and firefighting. The current infrastructure varies in pipe material and age which can cause emergency breaks that will need to be fixed when needed and throughout its life. Major improvements have been identified through a master plan that improves the network alleviating water age, regulating pressure, and creating redundancy. Staff is responsible for the maintenance, repair, and inspections of 136 miles of water main, 8,500 plus water meters, 3,000 backflow devices, 1,750 valves, 3 water tanks, 1,000 plus fire hydrants and numerous other water systems.

SEWER SYSTEM



Sewer System responsibilities include the maintenance and repair of the collections system which is approximately 79 miles of piping, 1,968 manholes, and 10 pumping stations located throughout the community. The Sewer system delivers 5 million gallons of flow on an average daily basis with peak capacity of 14.5 million gallons to the Greater Lawrence Sanitary District (GLSD). The collection system is maintained in the most practical manner to ensure service and reliability and is monitored to identify illicit flows. There is a significant cost and reserved capacity for flow to the GLSD so it is important that any and all deficiencies including inflow and infiltration (I/I) are determined so a budget number for repair can be incorporated into capital planning. The Board of Selectmen adopted the Sewer Master Plan Update by Underwood Engineers in June 2017.

PUBLIC WORKS DIVISION



STREETS ♦ PARKS/PROPERTIES ♦ SOLID WASTE ♦ FLEET

ROUTINE OPERATIONS

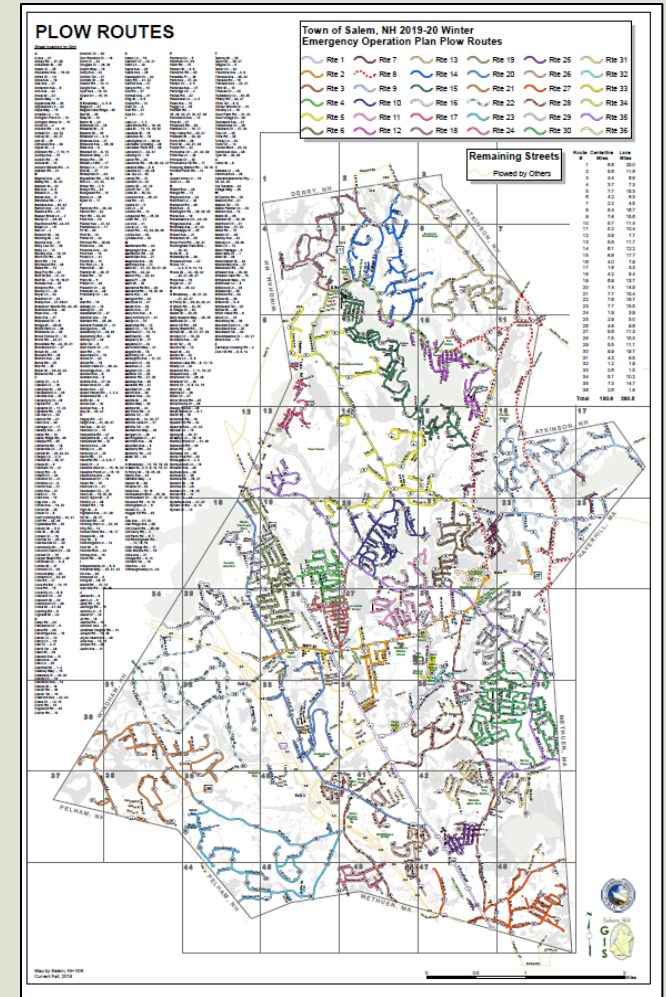


The Public Works Division is located at 21 Cross Street and is divided into four sections Fleet, Parks/Properties, Solid Waste, and Streets. The Divisions primary functions is to provide municipal services including but not limited to snow and ice removal, transfer station, storm water drainage, vehicle fleet maintenance, facility management, improvement and maintenance of roads, sidewalks, public properties, town parks, Rail Trail, and cemeteries. Staff also provides labor and assistance to the other Town Departments including Police, Fire, Community Services, and Town Clerk for elections.

WINTER OPERATIONS

Snow Emergencies are handled by the Public Works Division of Municipal Services. During a snow emergency every able-bodied employee from Public Works and Utilities are required to work from the beginning of the storm to the end -- until the roads in Salem are safe for travel. No two storms are alike. The time it takes to complete an operation is solely at the will of the weather. During a snowstorm it is important that residents understand that main roads are plowed, salted, and sanded first; then the secondary roads, and lastly the cul-de-sacs and back roads.

- 75 Pieces of Equipment
- 64 Available personnel
- 36 Plow routes
- 16 Primary routes
- 17 Secondary routes
- 35 Miles of sidewalk
- 4 Sidewalk routes
- 30 Buildings & parking areas
- 22 Utility Division Buildings



SPECIAL PROJECTS



RAIL TRAIL PARKING LOT

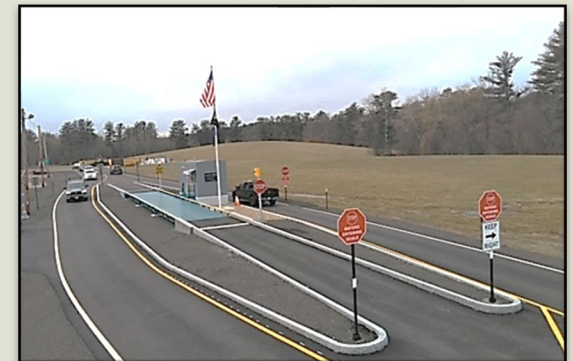


RAIL TRAIL PRV STATION



PINE GROVE CEMETERY EXPANSION

DEPOT STATION BEAUTIFICATION



TRANSFER STATION ROAD

MUNICIPAL SERVICES ADMINISTRATION

603-890-2150

Contact Municipal Services

Engineering

Engineering Projects

Municipal Buildings Advisory Committee

Pine Grove Cemetery Expansion Project

Public Works

Regional Water Line Users Including Windham

Report a Problem

Road Committee

Southern NH Regional Water

Utilities

Wastewater/Sewer System Master Plan

Water System Master Plan

Weekly Water Levels

Winter Emergency Operation Plan

Home » Departments

Municipal Services Department



SALEM MUNICIPAL SERVICES
ENGINEERING • PUBLIC WORKS • UTILITIES

Mission:
To provide high quality essential municipal services to the residents, businesses, and visitors to Salem in a professional, efficient and cost effective manner.

[Municipal Services Overview](#)

In 2015, The Town's Engineering, Public Works, and Utilities departments were combined to function together as one. The new department combines relative resources into an organizational structure that has improved and streamlined services that the residents of Salem have come to expect. The staff is comprised of thirty-six full time employees including the director, and three deputy directors who oversee the departments multimillion dollar operating budget, and large capital infrastructure projects. The Municipal Services Department is committed to the residents of Salem and will continue to provide a level of municipal service that everyone can be proud of.



Report a problem





2022 Neighborhood Road Reconstruction Project - Bannister Road Reconstruction
JULY 29, 2022 - 2:28PM
The 2022 Road Reconstruction is beginning on Bannister Road. The Contractor is scheduled to mobilize to Bannister Road on Monday August... more »



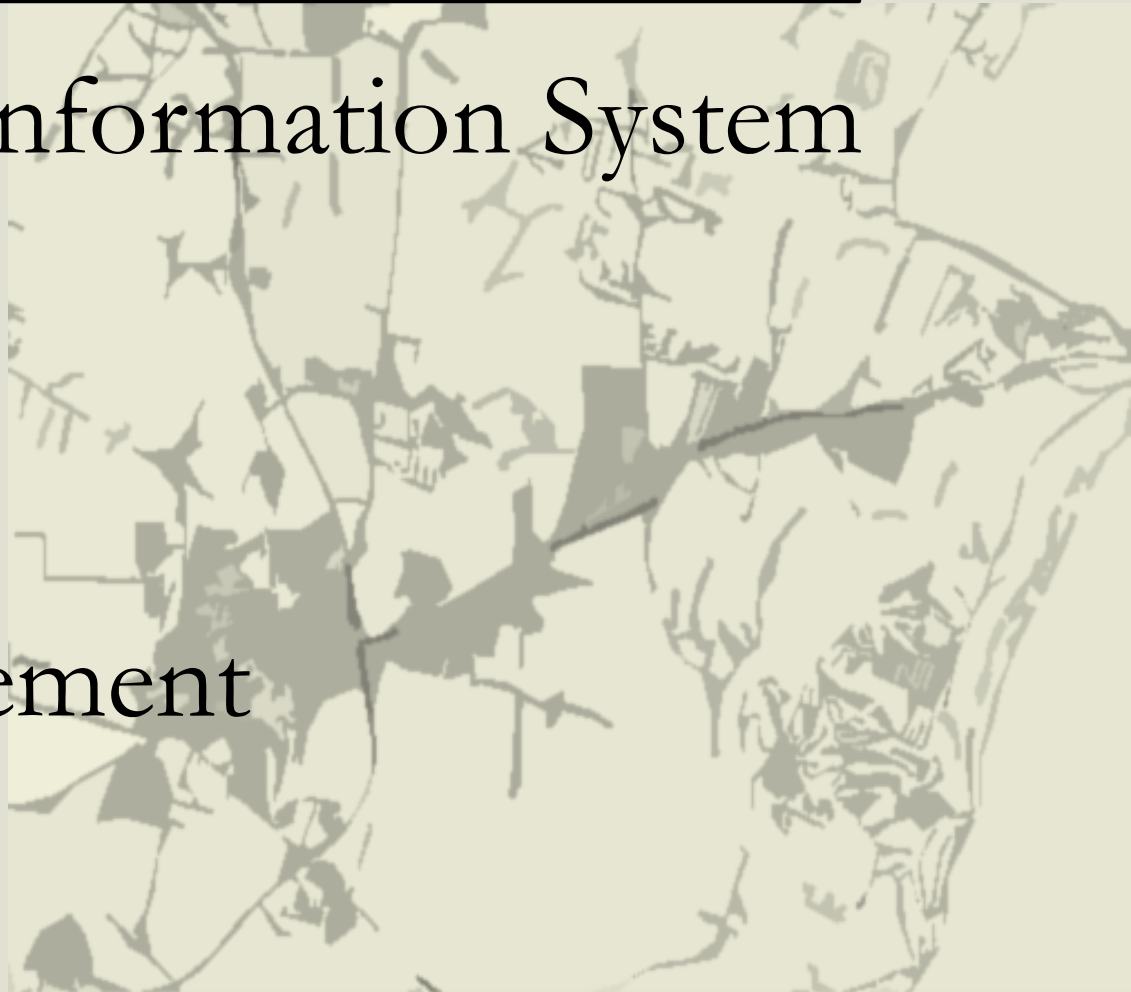
Treatment of Aquatic Weeds
JULY 18, 2022 - 1:41PM
Portions of Arlington Pond and all of Taylor Reservoir will be treated with an herbicide to control the growth of nuisance aquatic... more »



RT.28 ROAD CLOSURE - JULY 10TH AT 5:00 PM TO JULY 13TH AT 5:00 AM
JULY 6, 2022 - 11:14AM
The RT 28 (South Broadway) road closure is associated with the construction of a sewer connection as part of the adjacent Tuscan Village... more »

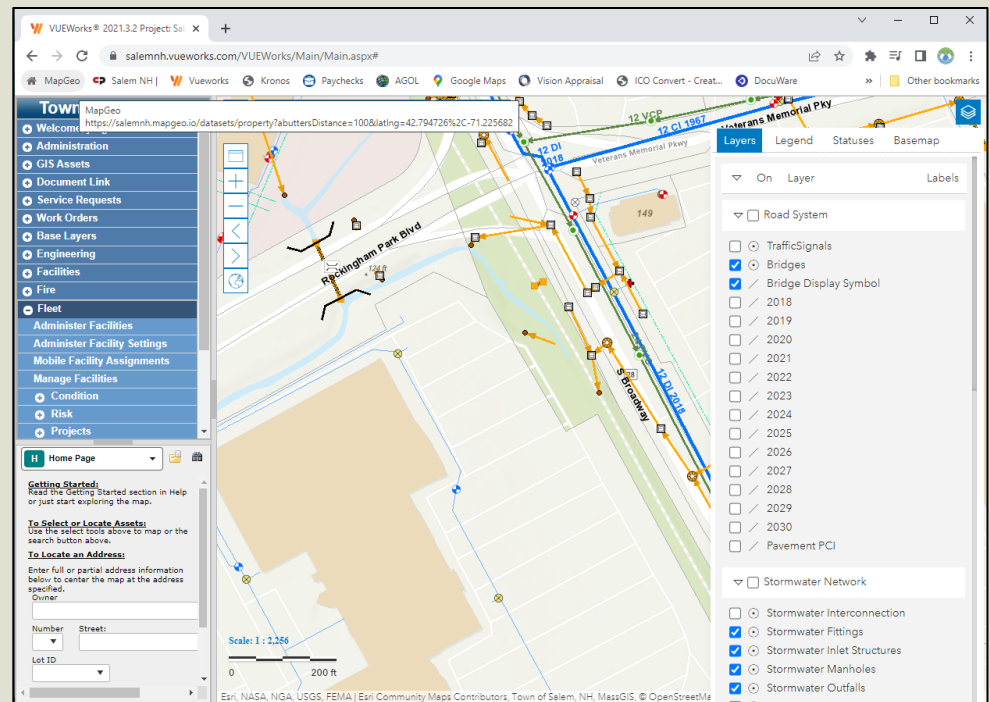
GIS

- Geographic Information System
- Mapping
- Planning
- Assessing
- Asset Management
- Budgeting



VUEWorks Asset Management Software

Software makes asset data accessible to Foremen and provides tools for work order tracking, asset condition assessments and capital planning.



Town of Salem

Welcome

Administration

GIS Assets

Document Link

Service Requests

Work Orders

Base Layers

Engineering

Facilities

Fire

Fleet

Administer Facilities

Administer Facility Settings

Mobile Facility Assignments

Manage Facilities

Condition

Risk

Projects

Home Page

Getting Started:

Read the Getting Started section in Help or just start exploring the map.

To Select or Locate Assets:

Use the select tools above to map or the search button above.

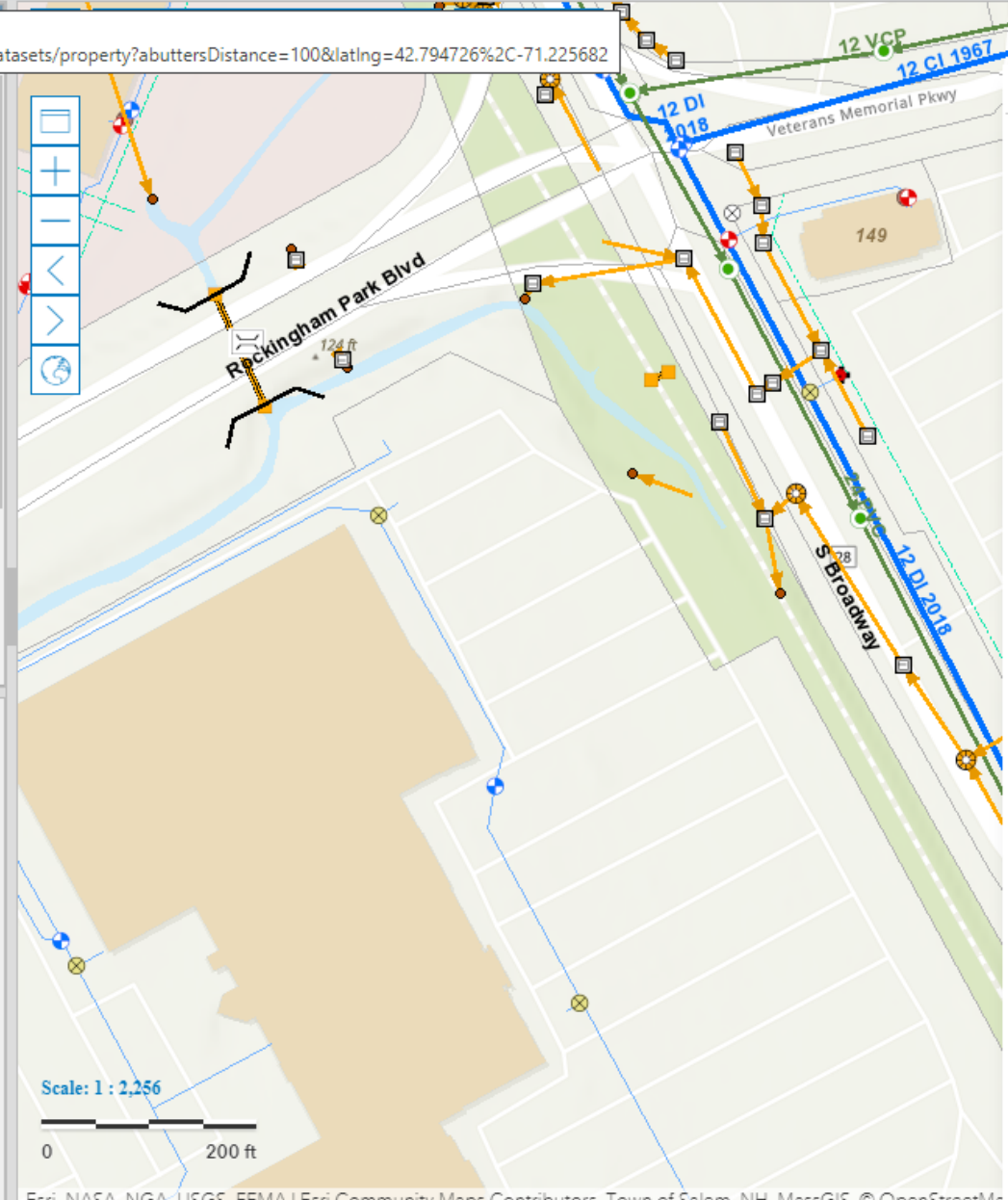
To Locate an Address:

Enter full or partial address information below to center the map at the address specified.

Owner

Number Street:

Lot ID



Layers Legend Statuses Basemap

On Layer

Road System

☐ TrafficSignals

☒ Bridges

☒ Bridge Display Symbol

☐ 2018

☐ 2019

☐ 2020

☐ 2021

☐ 2022

☐ 2023

☐ 2024

☐ 2025

☐ 2026

☐ 2027

☐ 2028

☐ 2029

☐ 2030

☐ Pavement PCI

Stormwater Network

☐ Stormwater Interconnection

☒ Stormwater Fittings

☒ Stormwater Inlet Structures

☒ Stormwater Manholes

☒ Stormwater Outfalls

Fleet Records

Vehicle Condition Index			40	
	Exterior Body Rust	25		
	Frame Rust	50		
	Plow Frame	25		
	Drive Train	25		
	Exterior Damage	50		
	Noise/Vibration	25		
	Interior	50		
	Operational Usage	50		

Manage Facilities

Filter is OFF - 3 of 3 Facilities in Asset Class

Facility

Table

Filter

Reports

Views

Primary View

View 1

View 2

View 3

Salem MS Fleet

Type of Vehicle

Trailer

Retired or Traded

Message Boards

6 Wheeler J Hook

Heavy Equipment

6 Wheeler Salter

6 Wheeler Dump

D-13 Dera

D12

D14

D17

D18

D19

D21

D78 Utility

Facility Type: Municipal Services Fleet

Details

A

Attributes

GIS: Not Linked [Link to GIS](#)

Save

Cancel

Field Name	Value
Asset ID	406
Fleet Type	Light Equipment
Department	Public Works
Division	Highway /Streets & Shops
Description	Large 6 Wheel Dump Truck
Vehicle ID	D18
Fuel Type	Diesel
Year	2022
Make	International
Model	HV 507
Vin	1HTEDTAR8NH260795
Purchase Date	07/20/2022
Replacement Cost	195000
Primary Function	Construction
Secondary Function	Winter Ops

Delete Facility

New Facility

Close

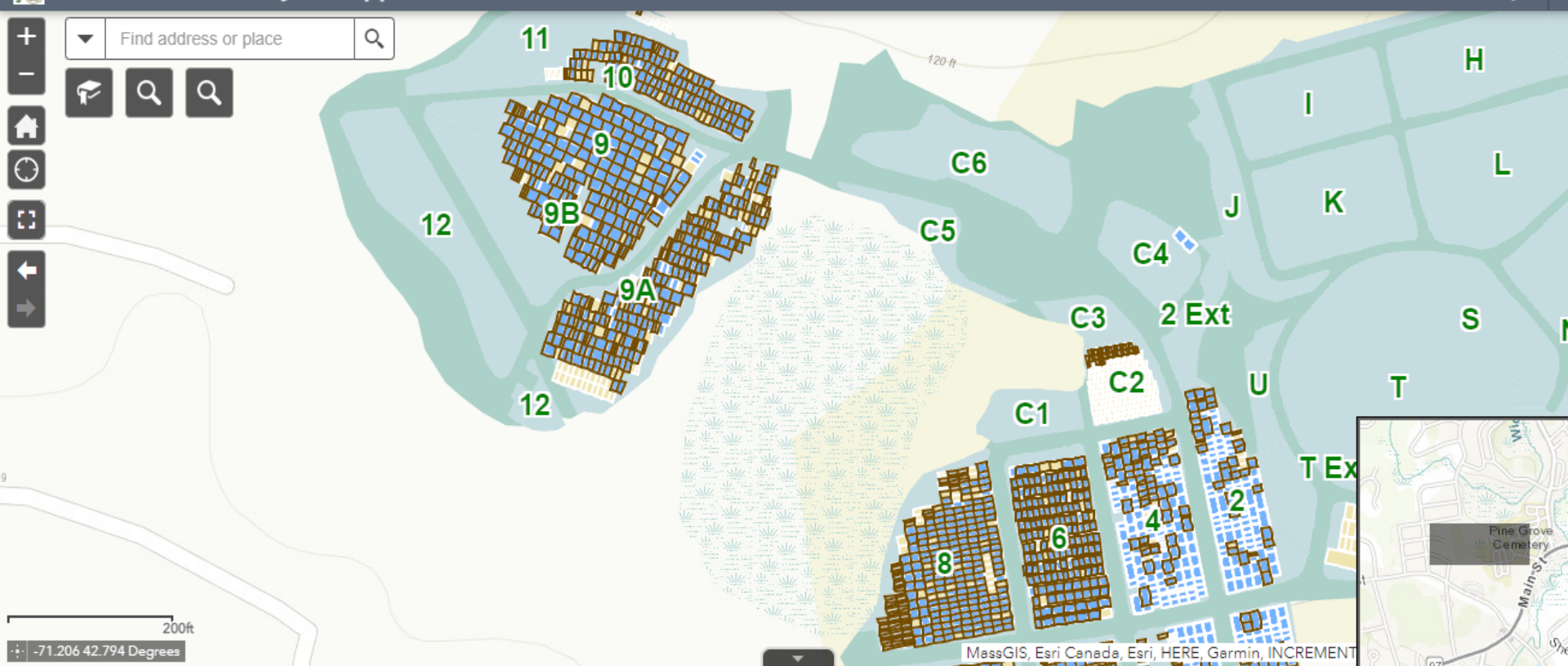
1

of 3

Cemetery Records

Mapping completed for numbered sections of Pine Grove Cemetery; burial and ownership cards being entered into GIS to enable public search and access.





Plot_Owner_Records													Pine Grove Owner Entry Form													Plot_Burial_Records													PineGroveCemeteryLayout - CemeteryRoads													PineGroveCemeteryLayout - Cemetery Plots													PineGroveCemeteryLayout - Cemetery Sections													PineGroveCemeteryLayout - Cemetery Sections																																																																																										
Options													Filter by map extent													Zoom to													<input checked="" type="checkbox"/> Clear selection													Refresh																																																																																																																				
Cemetery													Cemetery Section													Plot ID													Owner Last Name													Owner First Name													Amount Paid													Year Sold													Deed Date													Number of Graves													Type of Graves													Owner Address													City													State												
Pine Grove													9B													9B-A-21													LAI													KING																										2011													4/2/2011													4													Full Burial													44 MILLVILLE ST B-2A-06													SALEM													NH												
Pine Grove													9B													9B-C-14													CARO													BEVERLY J													800													2013													12/23/2013													2													Full Burial													8 JOANNA RD.													SALEM													NH												
Pine Grove													9B													9B-B-16													WIELAND													CARRIE A & MATTHEW C																										2011													12/20/2011													4													Full Burial													49A SANDY BEACH RD													SALEM													NH												
Pine Grove													9B													9B-A-10													DEANISIS													JUDY K																										2011													3/24/2011													4													Full Burial													14 OLIVE AVE													SALEM													NH												