

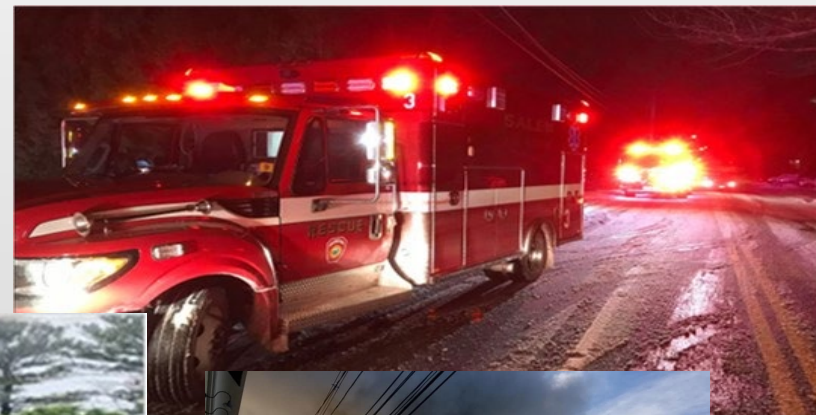


# SALEM FIRE DEPARTMENT

"We're here to help"



**Welcome!**





# Salem Fire Department

On-duty 24hrs/365 days a year

Operate from 3 Firehouses



## **The Salem Fire Department is made up of three Bureaus:**

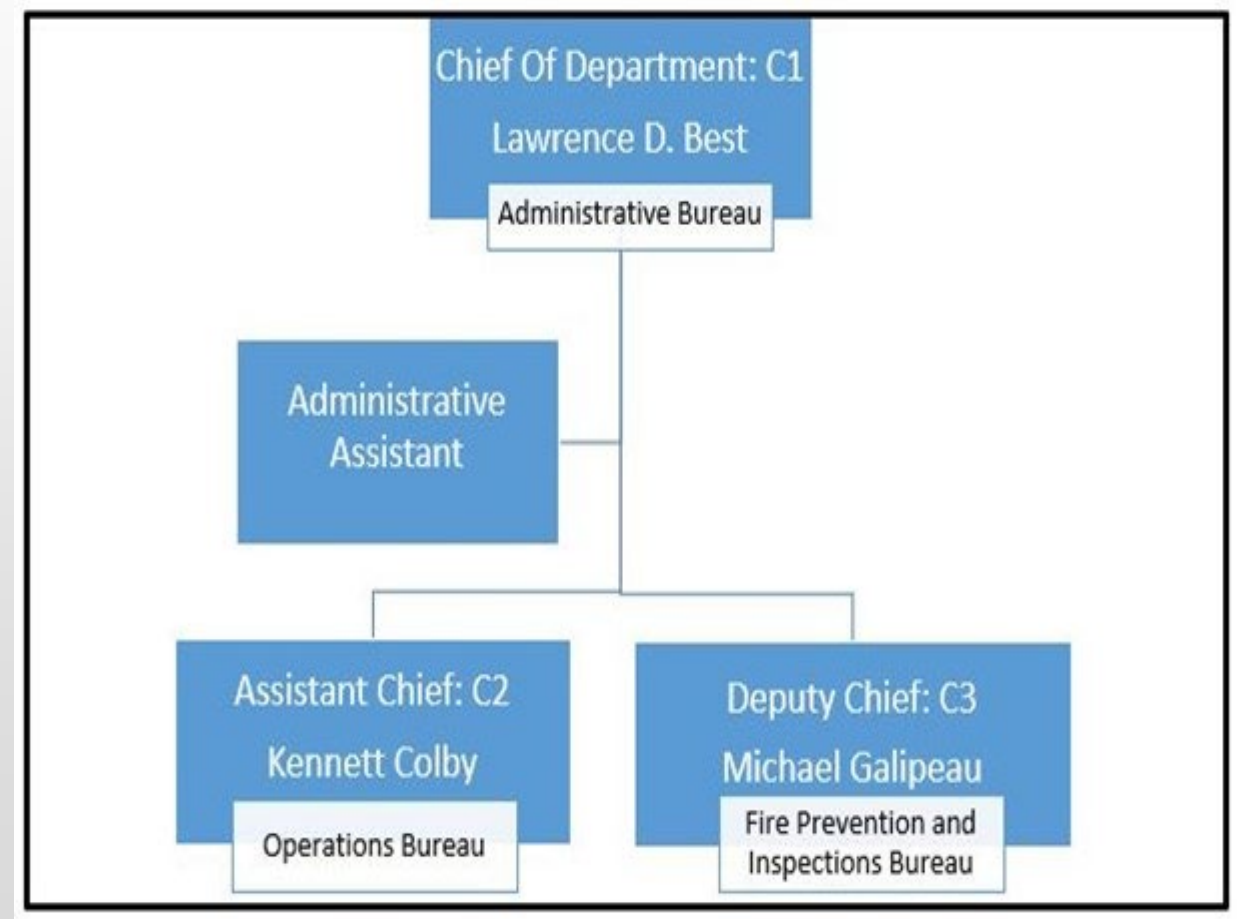
- Administrative Bureau
- Operations Bureau
- Fire Prevention and Inspections Bureau

---

The Department is headed by the:  
Fire Chief (C1)

who is supported by two executive level members  
Assistant Chief (C2) &  
Deputy Chief (C3)

Together we oversee approximately 88 members.





# Salem Fire Department

On-duty 24hrs/365 days a year

Operate from 3 Firehouses



## **The Salem Fire Department Operating Budget:**

- 2023 = \$15,606,651
  - **92% + = Salary & Benefits**
  - **8% = Operations/Facilities**
  - 2022 Revenue = \$3,637,582 est.
    - 88 Employees Total
- 

## **Budget is Broken Down Into:**

- Administration
- Suppression (Operations)
  - Communications
  - Stations
- Inspectional Services



# SALEM FIRE DEPARTMENT

## "We're here to help"



### *What Does the SFD Do?*

## SFD is an **ALL-HAZARDS** Department

- **Fire Suppression**
- **Emergency Medical Services (EMS)**
  - Advanced Life Support (ALS) & Basic Life Support (BLS) Ambulance Transport
- **Technical Rescue**
  - Vehicle Accidents
  - Machinery & Equipment Entrapments/ Accidents
  - Ice Rescue
  - Water Rescue
  - Rope Rescue (high angle & low angle)
  - Building Collapse Rescue
  - Trench Collapse Rescue
- **Hazardous Materials Responses**
- **Service/Assistance Calls**
  - Major Weather Events
    - Ice, Snow, Wind, Floods, Extreme Cold & Heat, Major Electrical Outages
- **Fire Prevention & Education**
- **Building Safety Inspections**
  - Health
  - Electrical
  - Building
  - Plumbing & Gas
- **CPR & Defibrillator Classes**
- **Child Passenger Car Seat Inspections**





# Salem Fire Department Operations

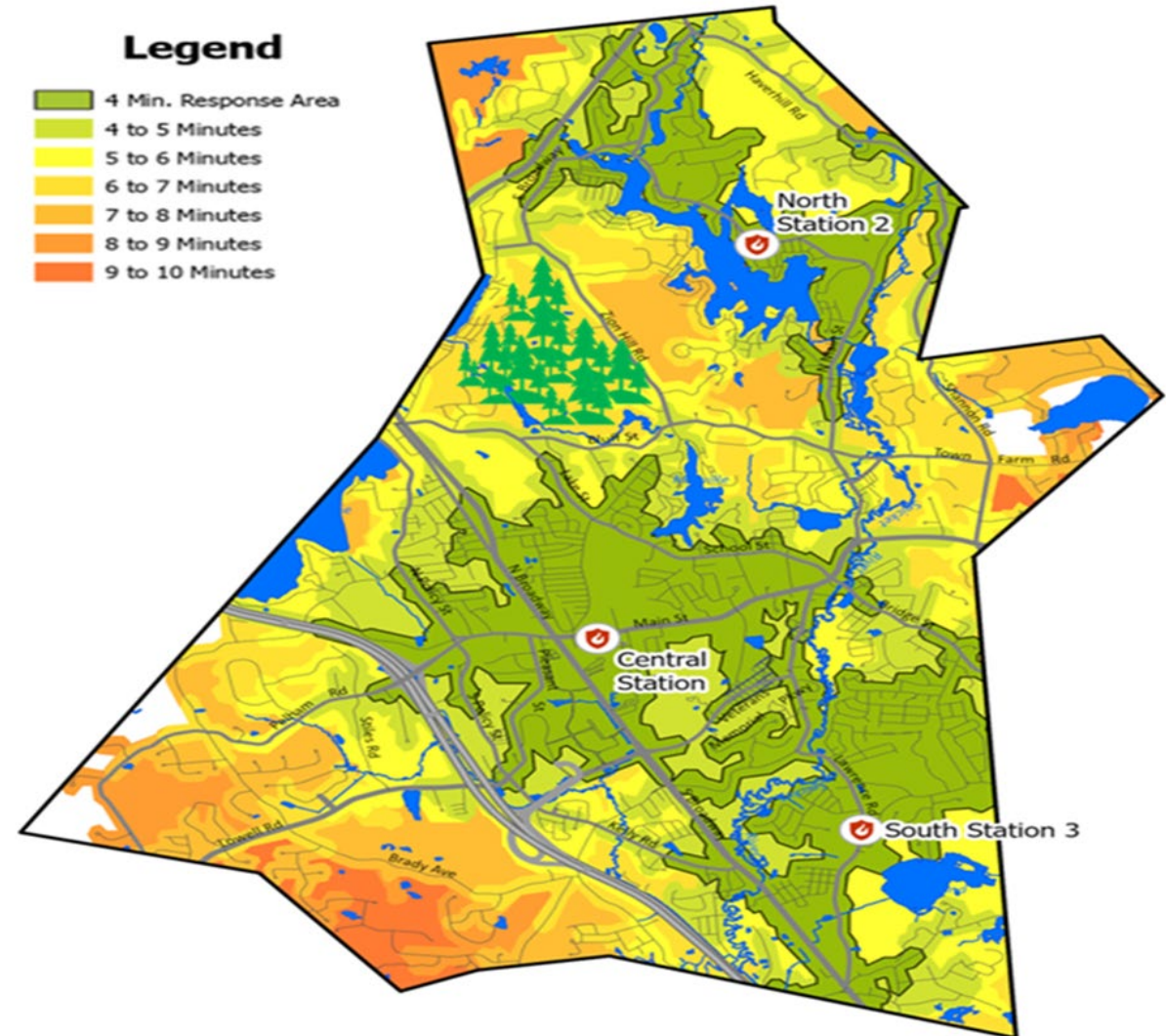
On-duty 24hrs/365 days a year

Operate from 3 Firehouses



## *Station Locations:*

- 152 Main Street- Station 1- Central/HQ
- 279 North Main Street- Station 2- North
- 170 Lawrence Road- Station 3- South





# Salem Fire Department Operations

On-duty 24hrs/365 days a year

Operate from 3 Firehouses



- 17 Fire Officers / Firefighters / EMTs / Paramedics
- 1 Fire Dispatcher

- Station 1 – 152 Main Street



- Station 2 – 279 North Main Street



- Station 3 – 170 Lawrence Road





# Salem Fire Department Operations

On-duty 24hrs/365 days a year

Operate from 3 Firehouses



## **The Operations Bureau:**

- **Overseen by the Asst. Chief (C2)**

- **Fire & EMS Operations Division**

- Includes Technical Rescue
    - Hazardous Materials
    - ALL Hazards

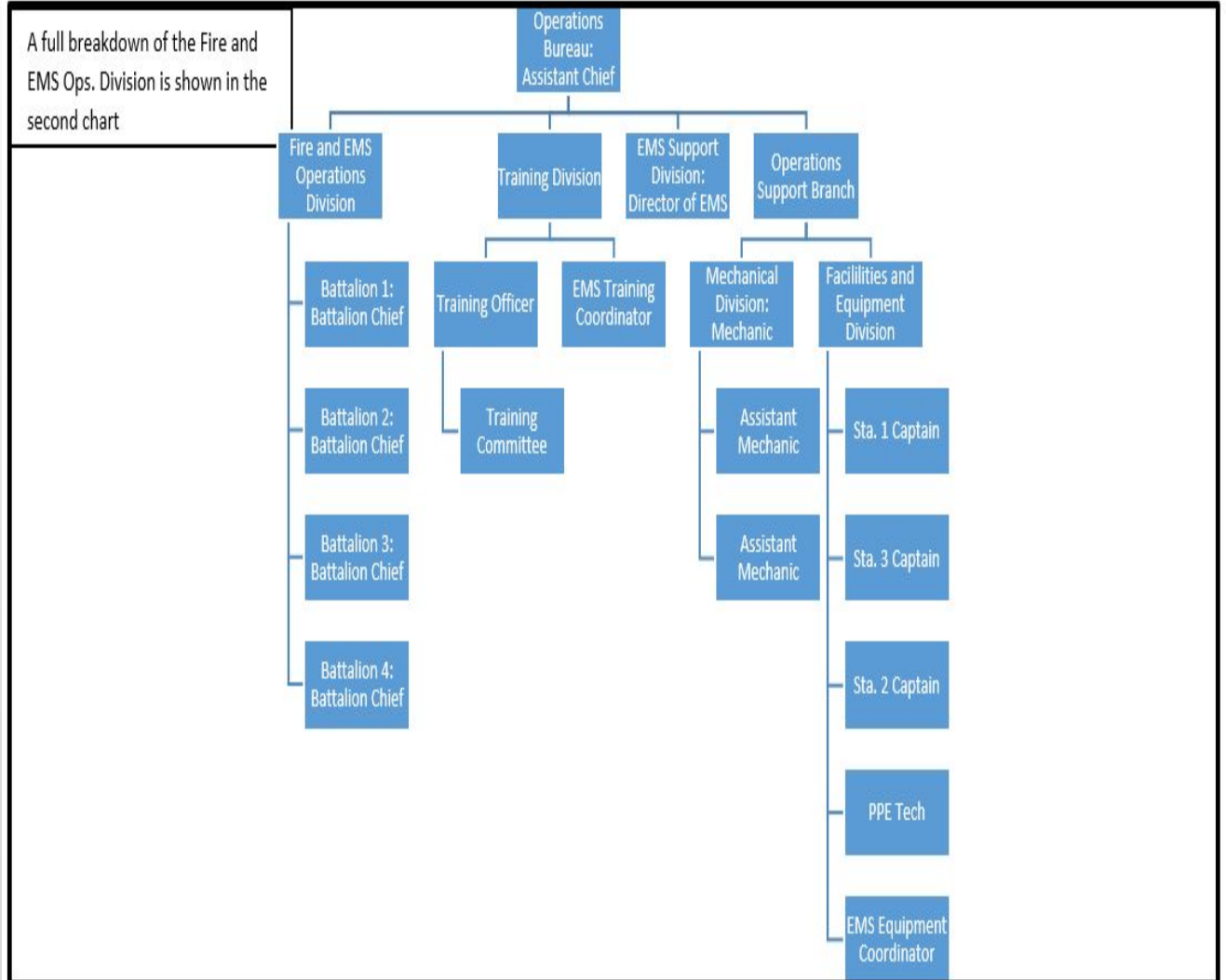
- **Training Division**

- **EMS Support Division**

- **Operations Support Branch**

- Mechanical Division
    - Facilities & Equipment Division

- **13 Direct Reports & Oversees 70 Members**



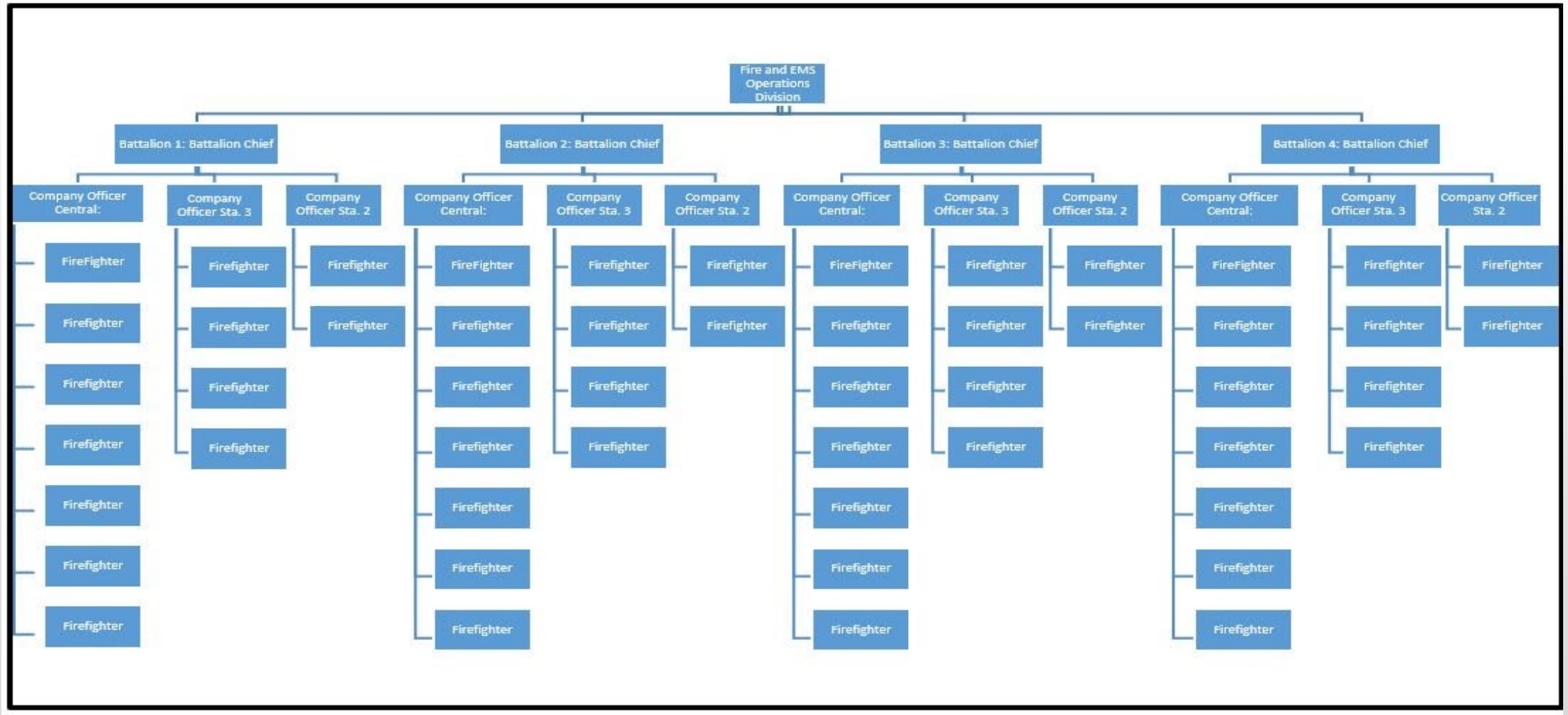




# Salem Fire Department Operations

On-duty 24hrs/365 days a year

Operate from 3 Firehouses







# SALEM FIRE DEPARTMENT OPERATIONS

“We’re here to help”



**Responses:**

Engine 1- 1,762

Rescue 1- 1,689

Rescue 4- 1,708

Medic 1- 2,127

Battalion Chief- 1,092

Squad 1- 177

**Station 1 Staffing:**

Engine 1- 1- Officer,  
2-Firefighter/EMT/Paramedic

Rescue 1- 2- Firefighter/EMT /Paramedic

Rescue 4- 2- Firefighter/EMT/Paramedic

Medic 1- 1- Firefighter/Paramedic

Battalion Chief- 1- Officer Shift Commander

**Cross Staff-**

Squad 1- Special Operations Truck

Fire Dispatcher- 1

**Station 1- Central/HQ**

**152 Main Street**

**Staffing & 2022 Responses**





# SALEM FIRE DEPARTMENT

## "We're here to help"



### Responses:

Engine 2- 789

Rescue 2- 464

Forestry 2- 18

### Station 2 Staffing:

1- Officer/EMT/Paramedic

2- Firefighter/EMT/Paramedic

### Station 2 Members Cross Staff-

Engine 2

Rescue 2

Forestry 2

### Station 2- North

279 N. Main Street

### Staffing & 2022 Responses



Note: When the Station 2 members are responding to an incident, they only respond with one truck/apparatus, which means what is left behind is no longer available/staffed.



# SALEM FIRE DEPARTMENT

## "We're here to help"



### Responses:

Tower Ladder 1- 1,252

Rescue 3- 1,450

Engine 3- 317

### Station 3 Staffing:

Tower/Ladder 1-

1- Officer,  
2 Firefighter EMT/Paramedic

Rescue 3-

2- Firefighter/EMT/Paramedic

### Cross Staff-

Tower Ladder 1 & Engine 3

Note: When the Station 3 Tower/Ladder 1 members respond to an incident with Engine 3, the Tower/Ladder is left behind and no longer available/staffed.

### Station 3- South

170 Lawrence Road

### Staffing & 2022 Responses







# SALEM FIRE DEPARTMENT

## "We're here to help"



**Answered over 5,900 calls for service in 2022**

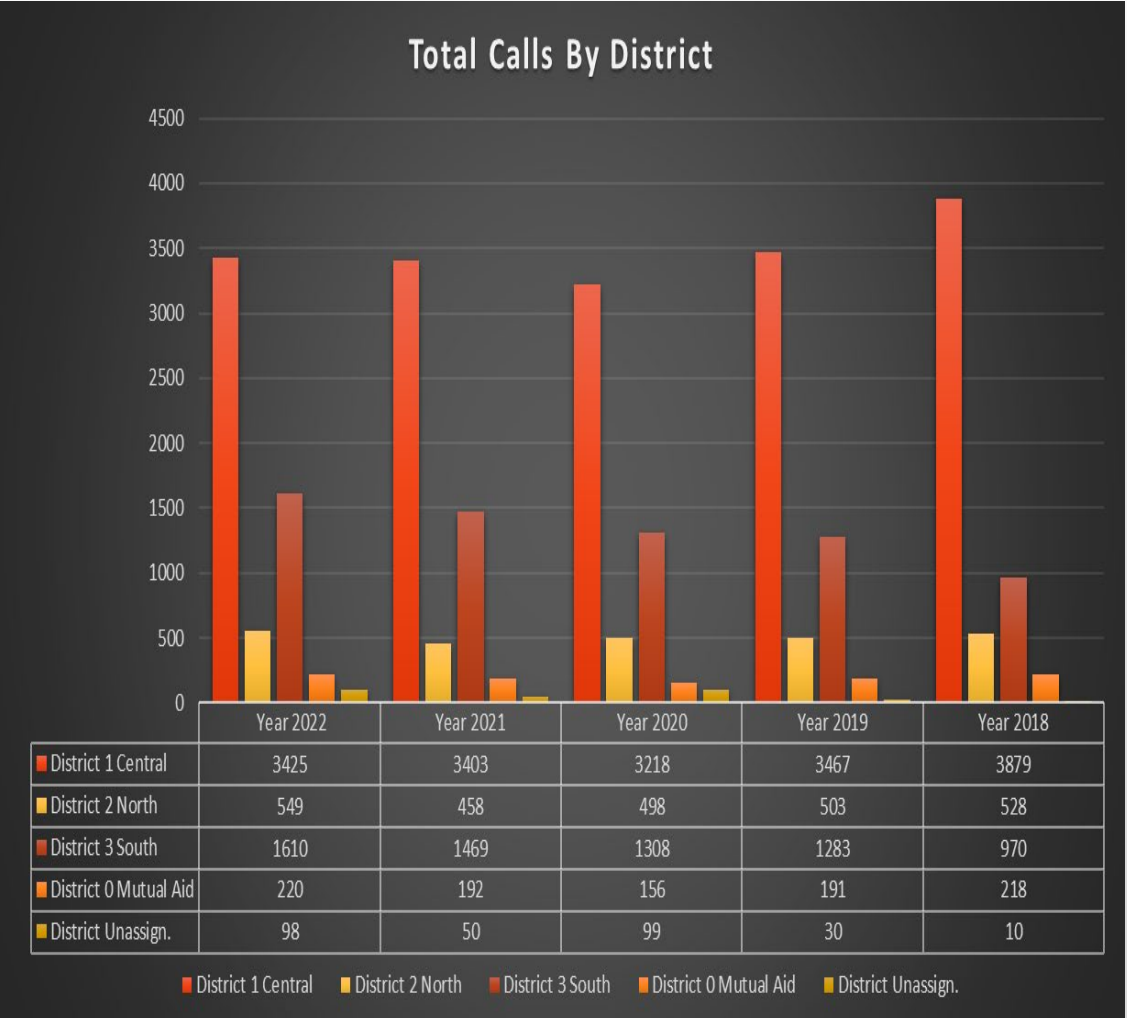
- Fire
- EMS
- Technical Rescue
- Hazardous Materials
- Service/Assistance Calls





# SALEM FIRE DEPARTMENT

## “We’re here to help”

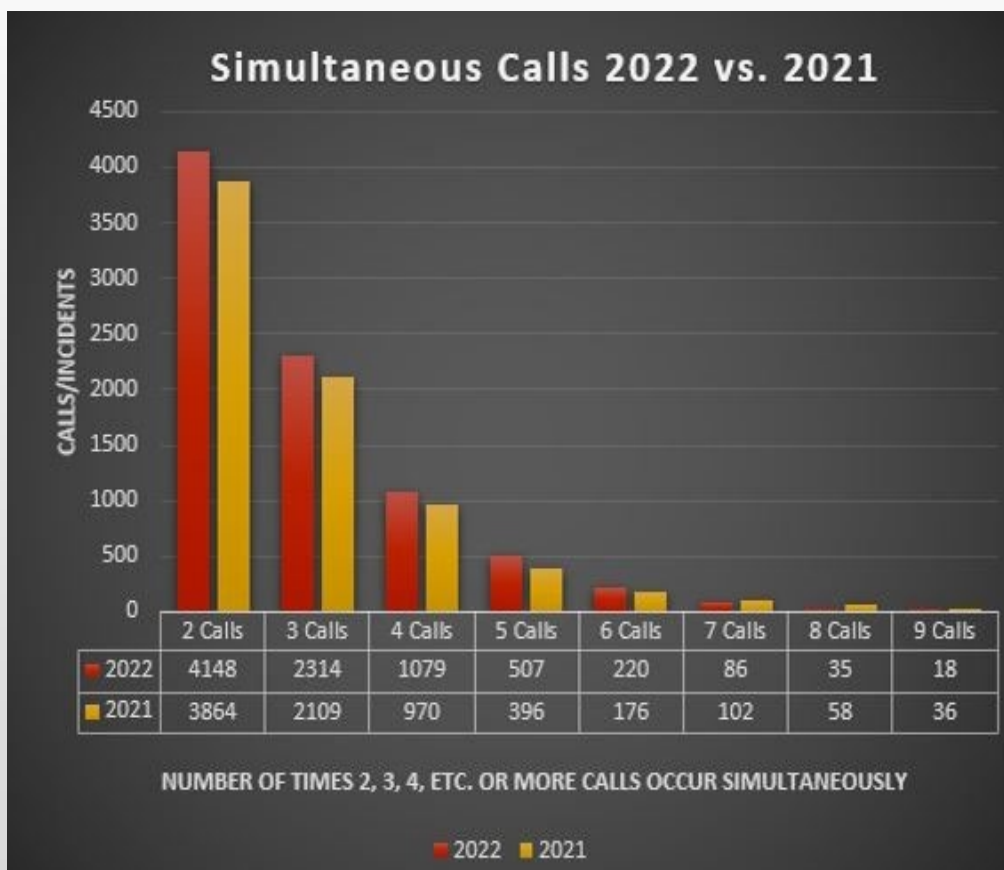


- **2022 Annual Total = 5,902 calls**
  - EMS Calls/Incidents = 4,125
  - Fire Calls/Incidents = 1,777
- **2021 Annual Total = 5,572 calls**
  - EMS Calls/Incidents = 3,811
  - Fire Calls/Incidents = 1,761



# SALEM FIRE DEPARTMENT

## "We're here to help"



- *70% of the time during the year of 2022, SFD was operating in simultaneous mode, meaning 2 or more incidents were occurring at the same time.*
- *The total number of simultaneous responses increased a total of 284 calls compared to 2021.*
- *During the month of December, we operated in a simultaneous response mode 75% of the time. This is a 5% increase over the month of November 2022.*



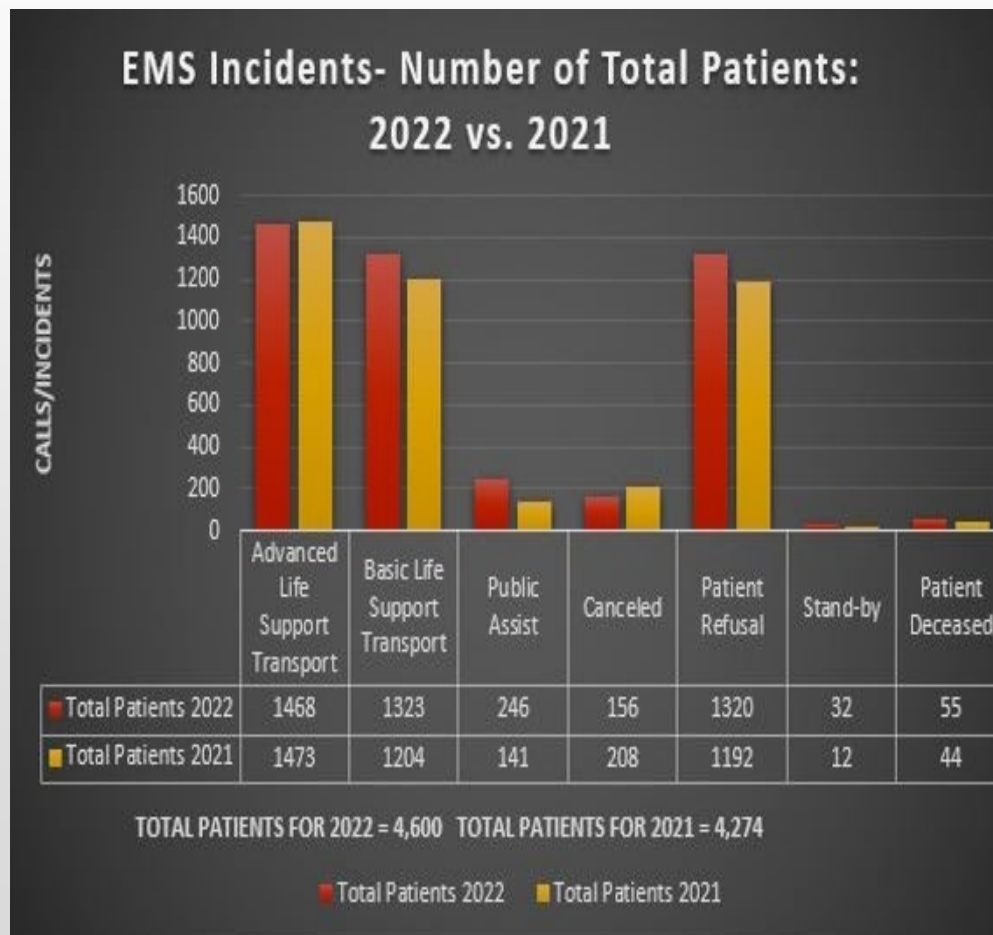


# SALEM FIRE DEPARTMENT

## “We’re here to help”



- EMS Call Types:
  - Advanced Life Support
  - Basic Life Support
  - Public Assist
  - Cancelled
  - Patient Refusal
  - Stand-by
  - Patient Deceased





# Salem Fire Department

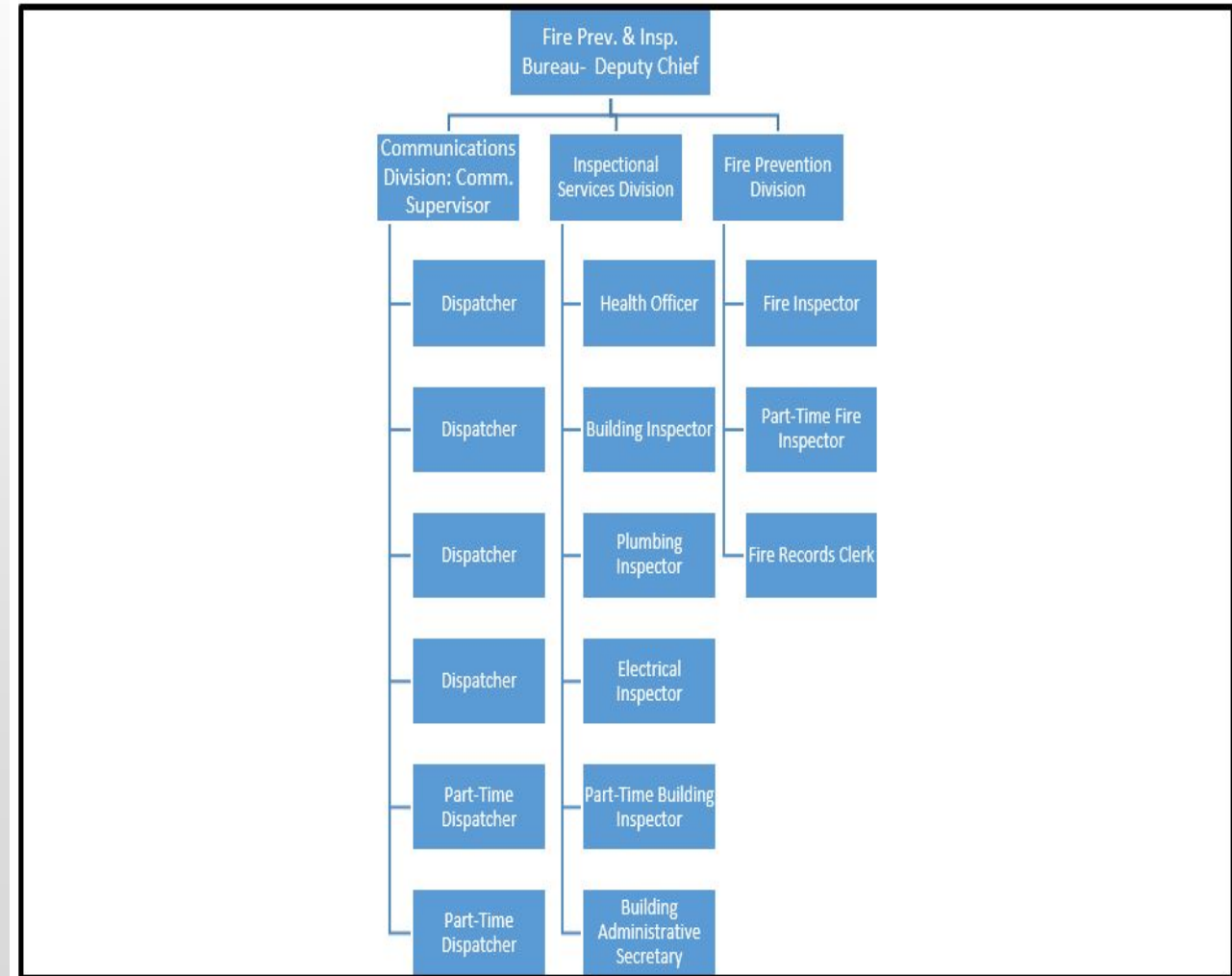
## Fire Prevention & Inspectional Services Bureau

Operates from Town Hall



### **Fire Prevention & Inspectional Services Bureau:**

- Overseen by the Deputy Chief (C3)
  - Fire Prevention Division:
    - Fire Inspectors = 1 FT & 1 PT
    - Records Clerk
  - Inspectional Services Division:
    - Health Officer
    - Building Inspectors = 1 FT & 1 PT
    - Plumbing Inspector
    - Electrical Inspector
    - Admin. Secretary
  - Communications Division:
    - Communications Supervisor
    - Dispatchers = 4 FT & 2 PT
- 10 Direct Reports & Oversees 16 Members





# Salem Fire Department

## Fire Prevention & Inspectional Services Bureau

Operates from Town Hall



### *Inspectional Services Division*

#### *Inspections, Permits Issued & Fees Received:*

- 3,189 Permits issued
- \$2,621,700 Fees received
- 3,063 Building Safety Inspections
- \$27,173.71 - Permit Fees waived (Town and School Projects)

### *Fire Prevention Division*

#### *Inspections, Permits Issue & Fees Received:*

- 588 Permits issued
- \$61,946 Permit Fees received- Estimated
- 810 Building Safety Inspections
- \$125,500 Radio Box Monitoring Fees Collected
- 87 - Fires and related incidents were investigated for origin and cause, with an estimated fire loss of \$615,560





# Salem Fire Department

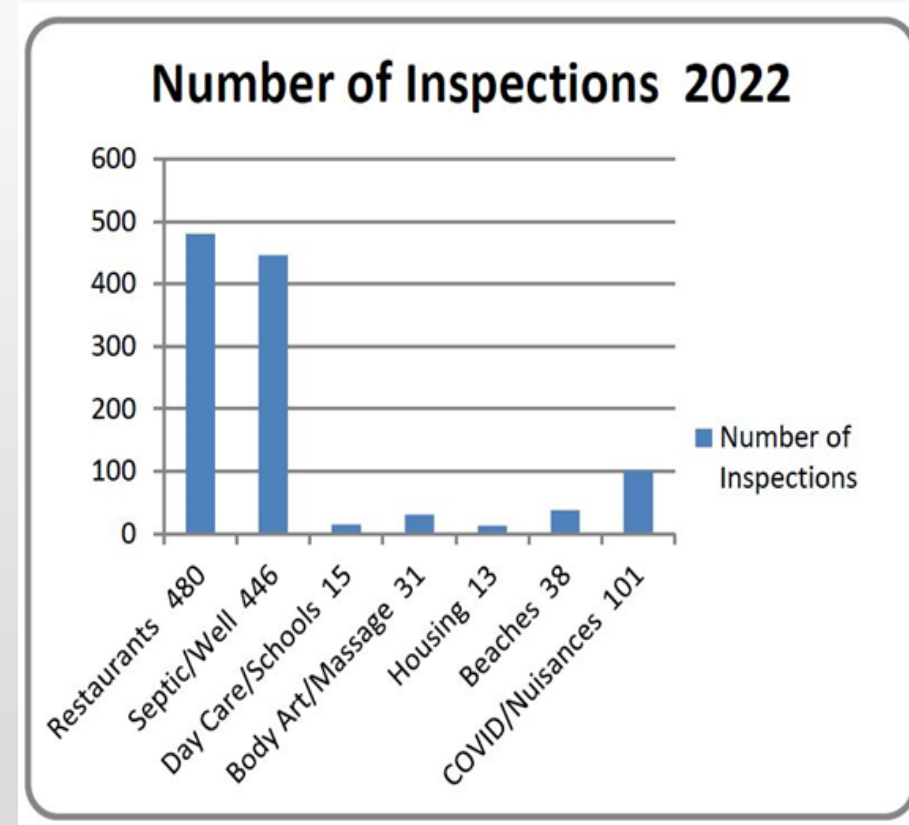
## Fire Prevention & Inspectional Services Bureau

Operates from Town Hall



### Health Officer Inspections, Permits Issue & Fees Received:

- 325 Permits issued
- \$60,055 Permit Fees receive- Estimated
- 1,053 Health Safety Inspections
- 446 Well/Septic Permits issued
- \$23,940 Well/Septic Permit fees received- Estimated



# SALEM FIRE DEPARTMENT



## West-Side Fire & EMS Station and Salem Fire 4-Phase Facilities Plan

October 17, 2022  
Presented to the BOS



# West-side Fire & EMS Station & Salem Fire 4-Phase Facilities Plan



After the March 2022 Vote:

- We re-evaluated and established a plan based on 3 simple parameters:
  - Coverage
  - Cost
  - Scalability
  
- We set out to create a plan that more efficiently and effectively provides fire and EMS coverage to the entire Town, while being fiscally responsible, and allowing for future growth so that as the Community continues to grow, the Department can grow and evolve to meet the needs of our Community.





# West-side Fire & EMS Station & Salem Fire 4-Phase Facilities Plan



## *Presentation Topics:*

***WHY*** is a West-side Fire & EMS Station Needed?

- The need for a West-side Fire & EMS Station- data & response Info.

***WHERE*** should a West-side Fire & EMS Station be located?

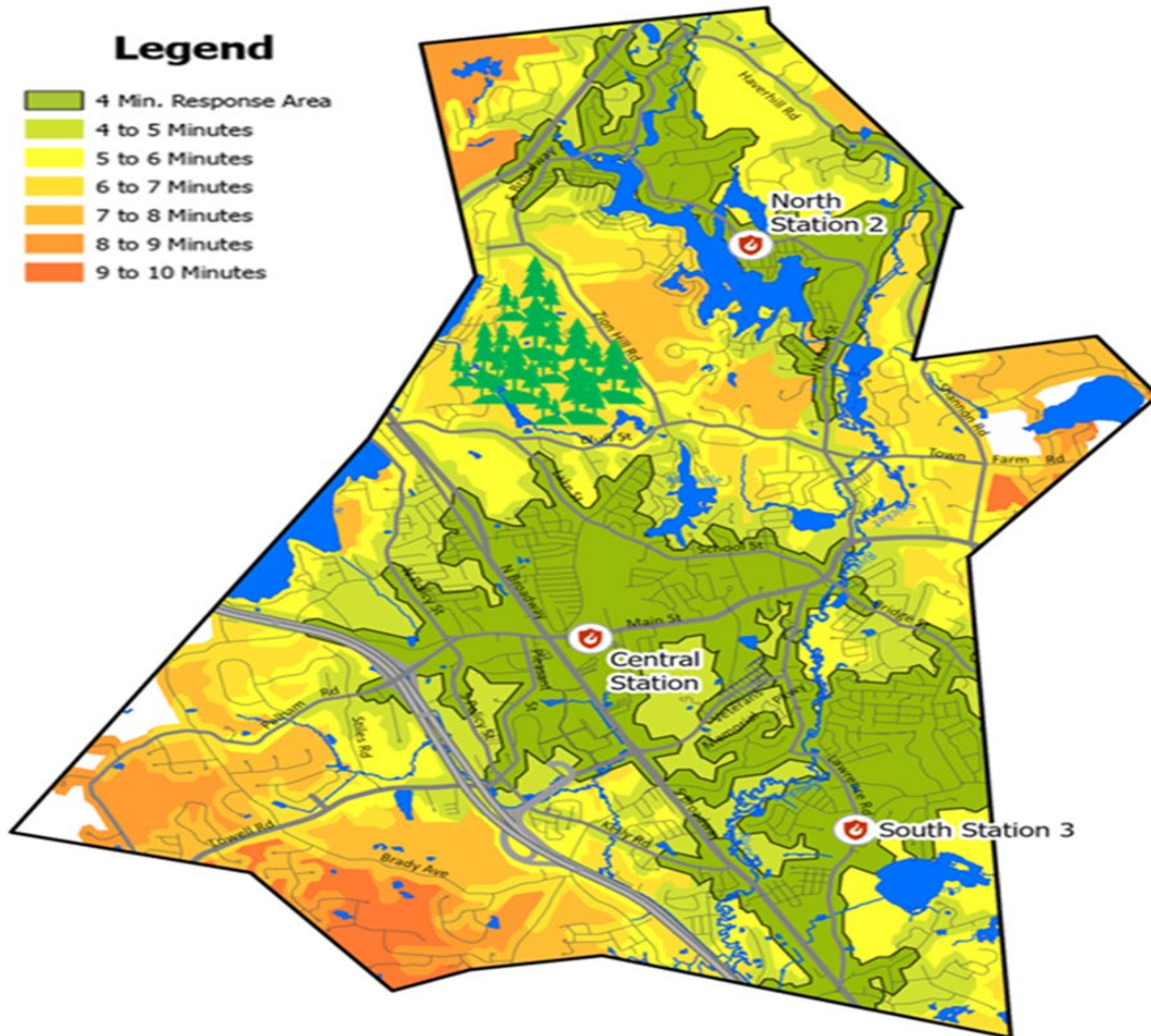
- Best location geographically & why

***HOW*** Salem Fire Department Four (4) Phase Facility Station Plan

- Adopt the SFD Four (4) Phase Facility Plan



# *WHY* is a West-side Fire & EMS Station Needed?

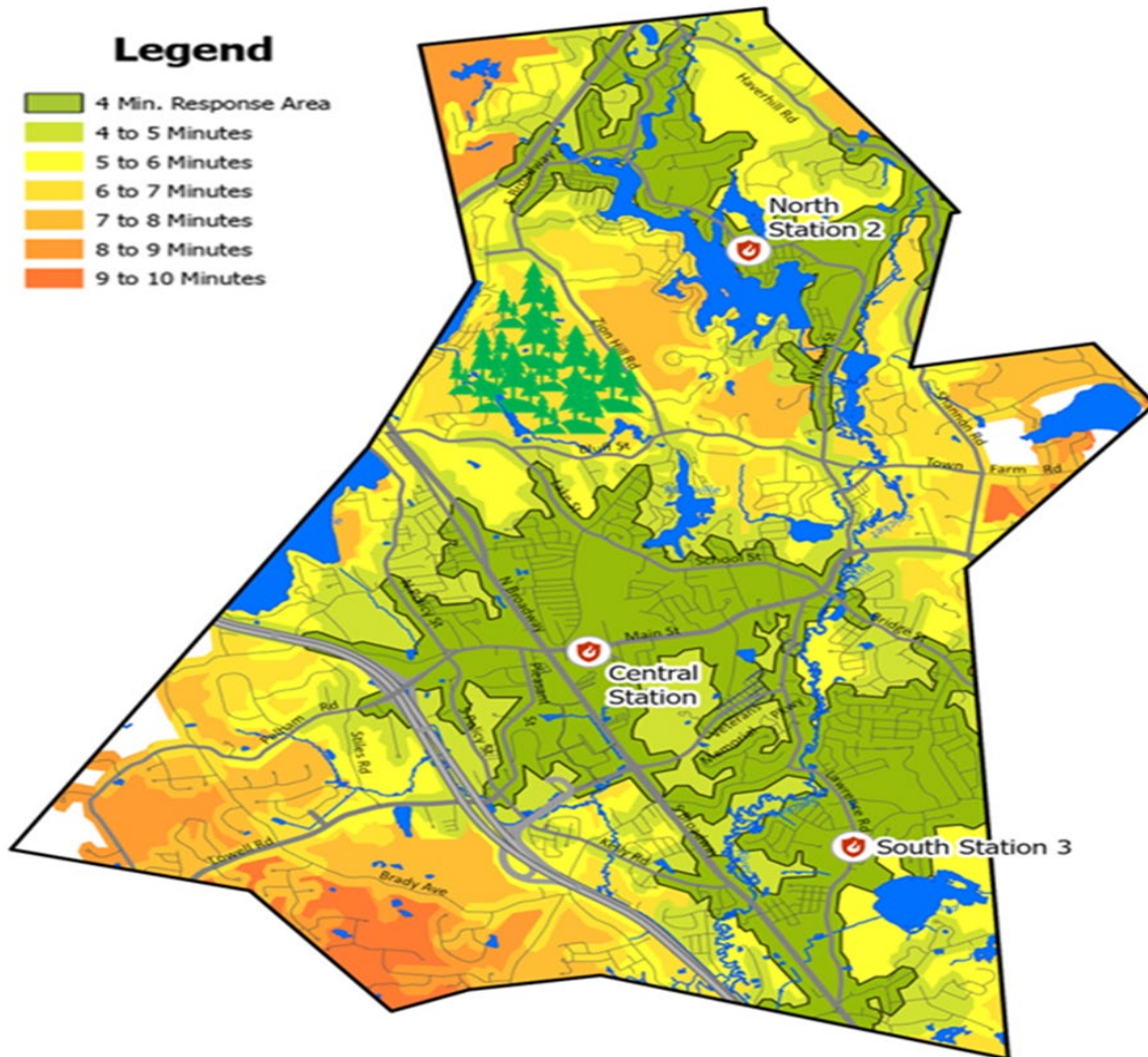


## CURRENT CONDITIONS

- Approximate travel time from the current 3 Stations –
  - 152 Main Street- Station 1- Central/HQ
  - 279 North Main Street- Station 2- North
  - 170 Lawrence Road- Station 3- South



# *WHY* is a West-side Fire & EMS Station Needed?



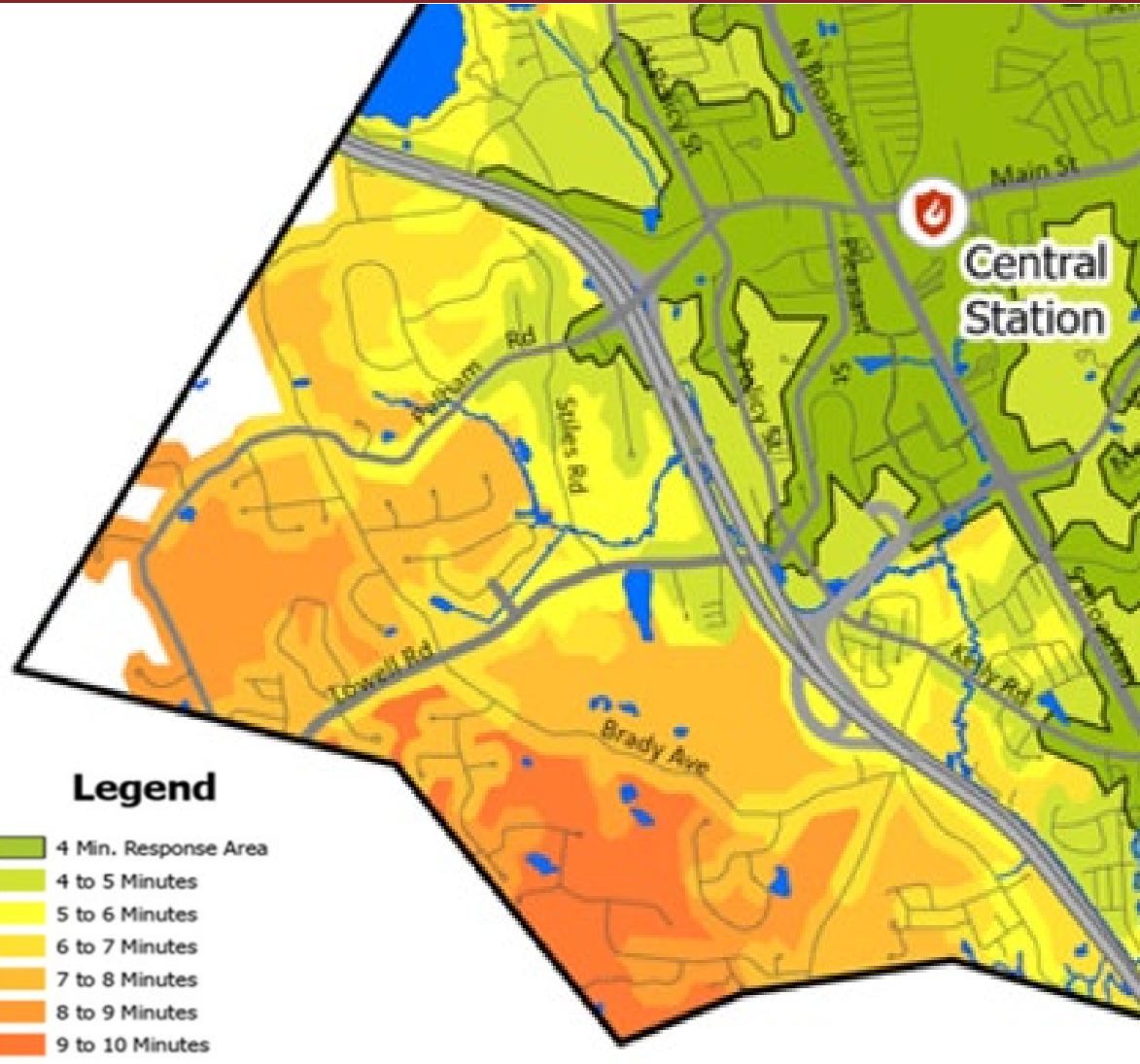
## CURRENT CONDITIONS

- Approximate travel time from the current 3 Stations –
  - NFPA 1710 – National Standard that states fire/EMS units should arrive within 4 or fewer minutes 90% of the time.
  - We are steady between 62-65% for the past 3 years.
  - VERY poor on the West-Side- 47% YTD; 38% last month





# *WHY* is a West-side Fire & EMS Station Needed?



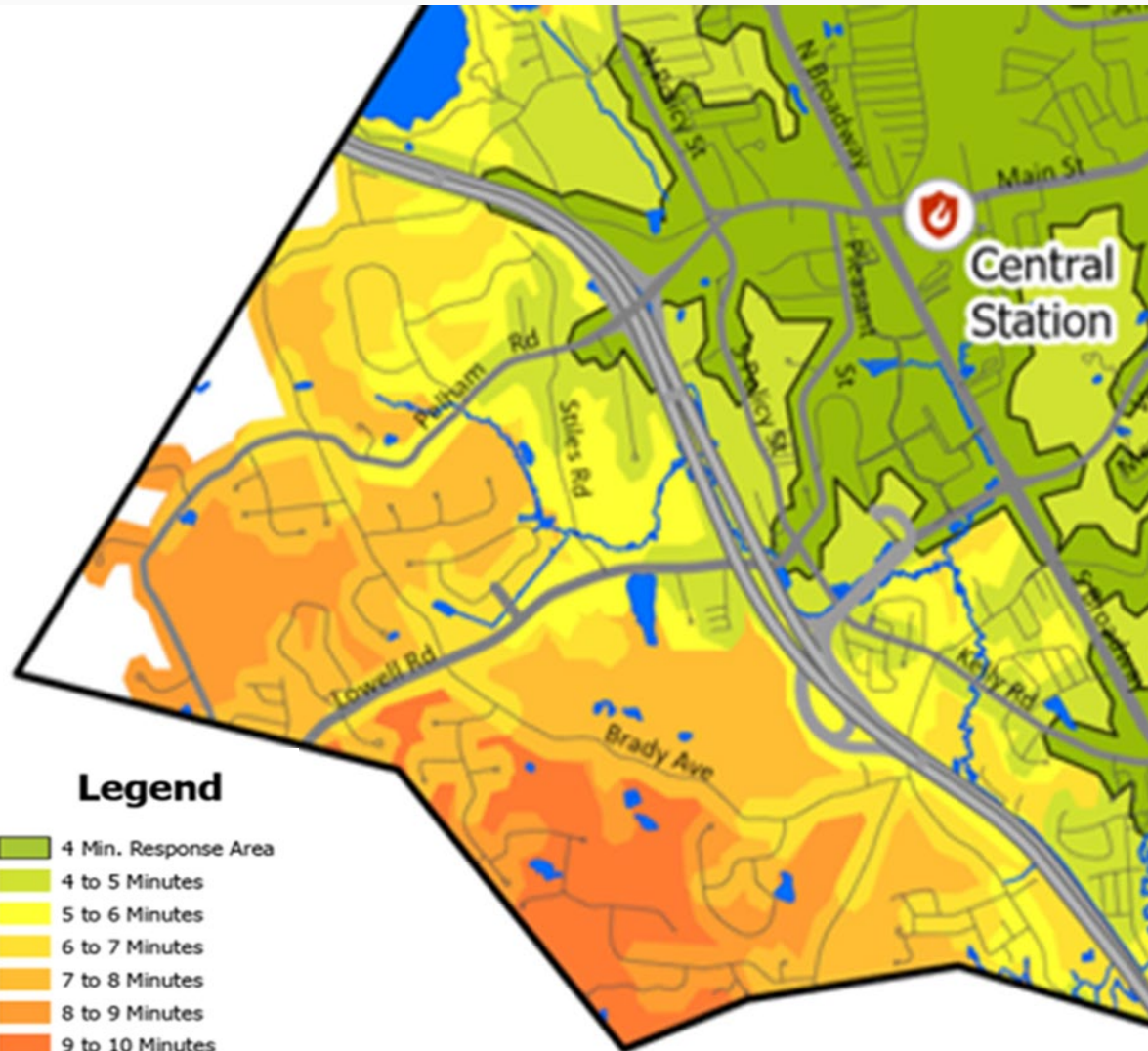
## WEST-SIDE CONDITIONS

- Service area is generally west of I-93
- Approx. 1,800 homes, businesses, commercial & industrial property
- Approx. \$1.2 Billion of assessed value (total Town = \$6.7 Billion)
- Lengthy response times of 7 to 9 minutes or more
- During 2022 = 1,103 responses
  - 19% of the total responses (5,902)
  - Consistent with prior years





# *WHERE* should a West-side Fire & EMS Station be located?



## Evaluation Metrics Include:

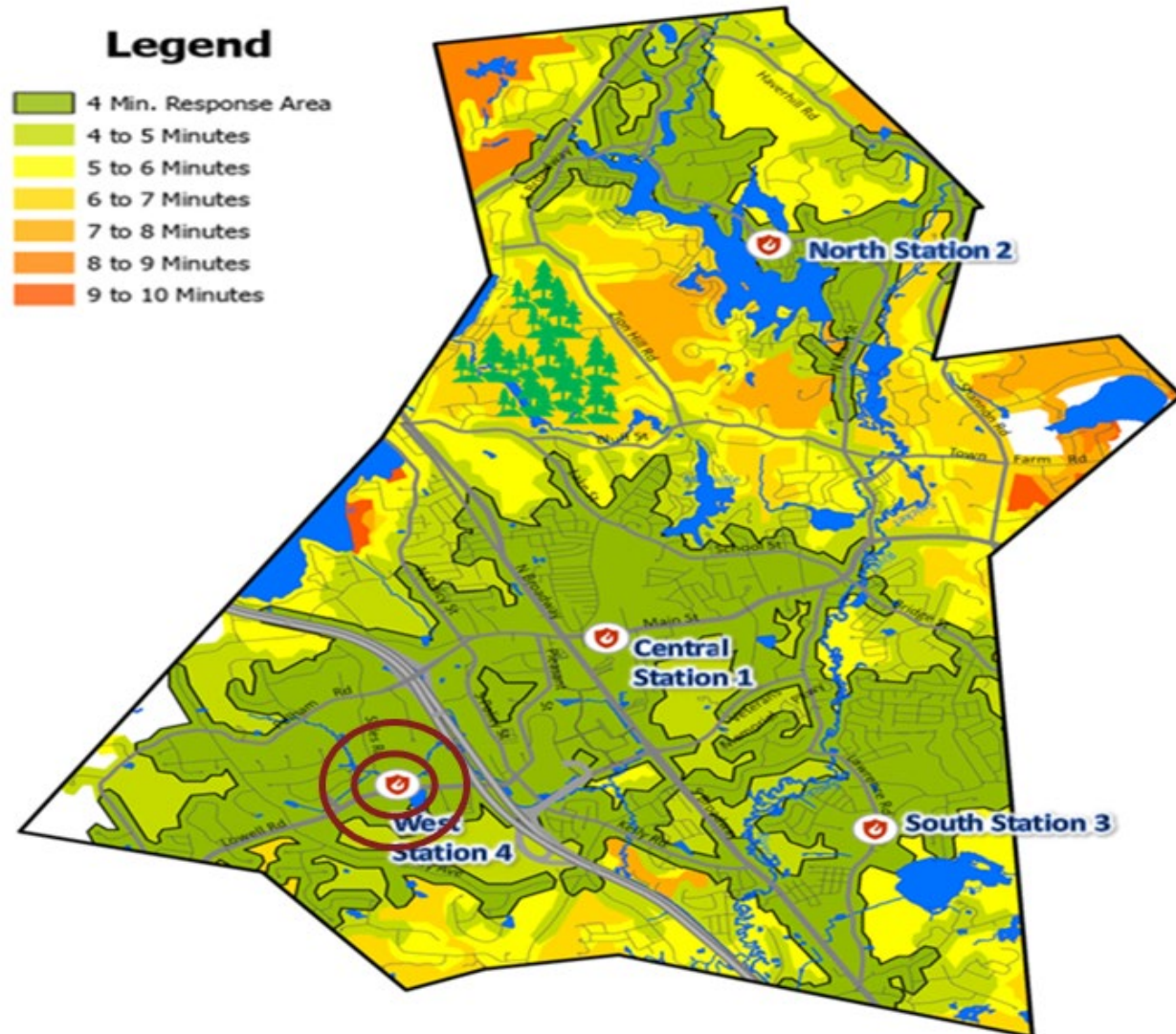
- Approx. # of addresses served
- Approx. # of historic calls served
- Proximity to service area to high call generators
- Approx. % overlap between service areas/districts for each Fire Station
  - Higher overlap results in staffing & apparatus inefficiencies
- Good North/South & East/West routes for efficient travel
- Approx. property size of 4-5 acres



# *WHERE* should a West-side Fire & EMS Station be located?



## Legend



## Property Location Evaluations:

- 2021 evaluated 7 properties & 2022 evaluated 2 additional properties
- Found the Lowell Road & Stiles Road area to be the most efficient & effective location

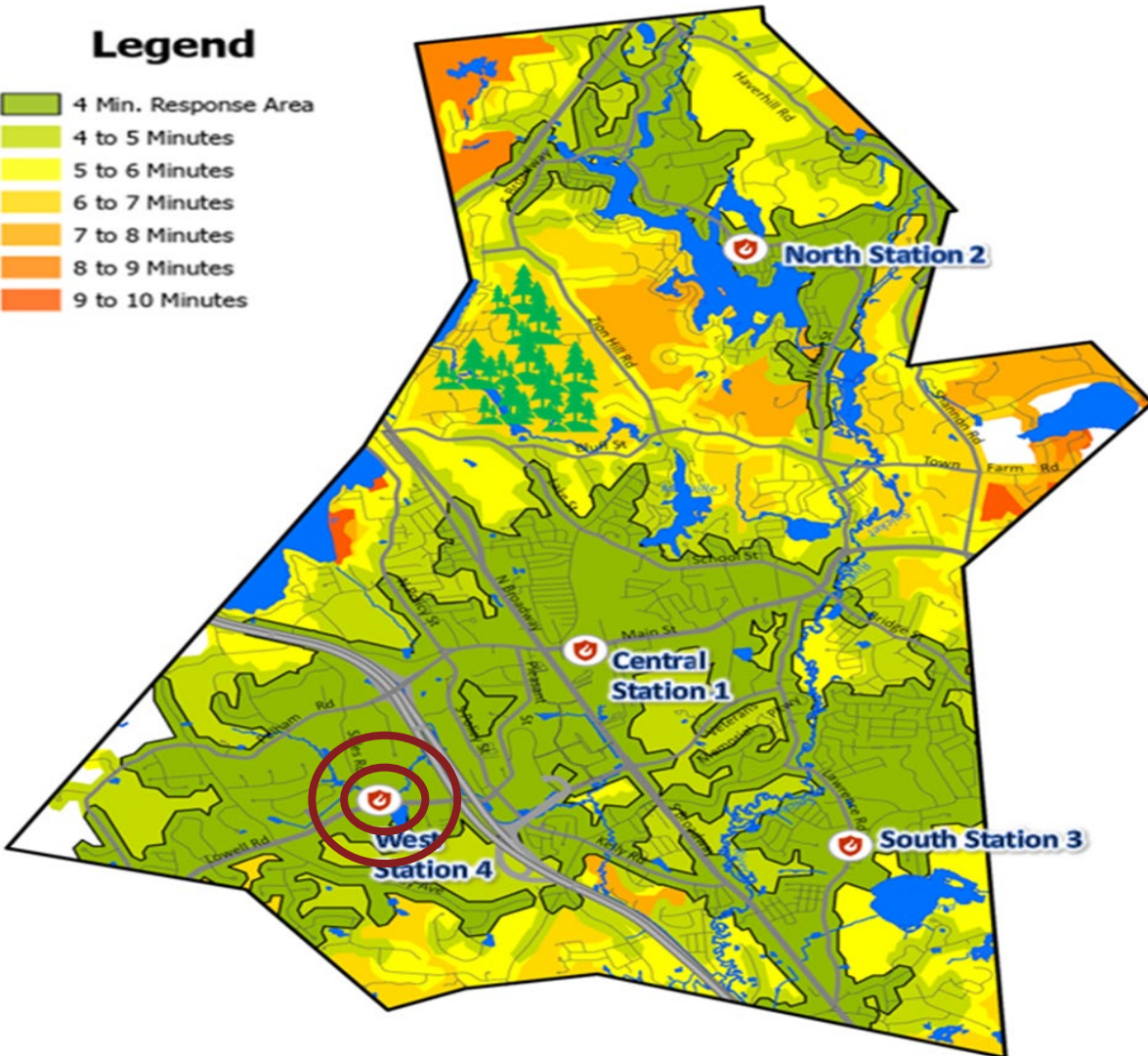




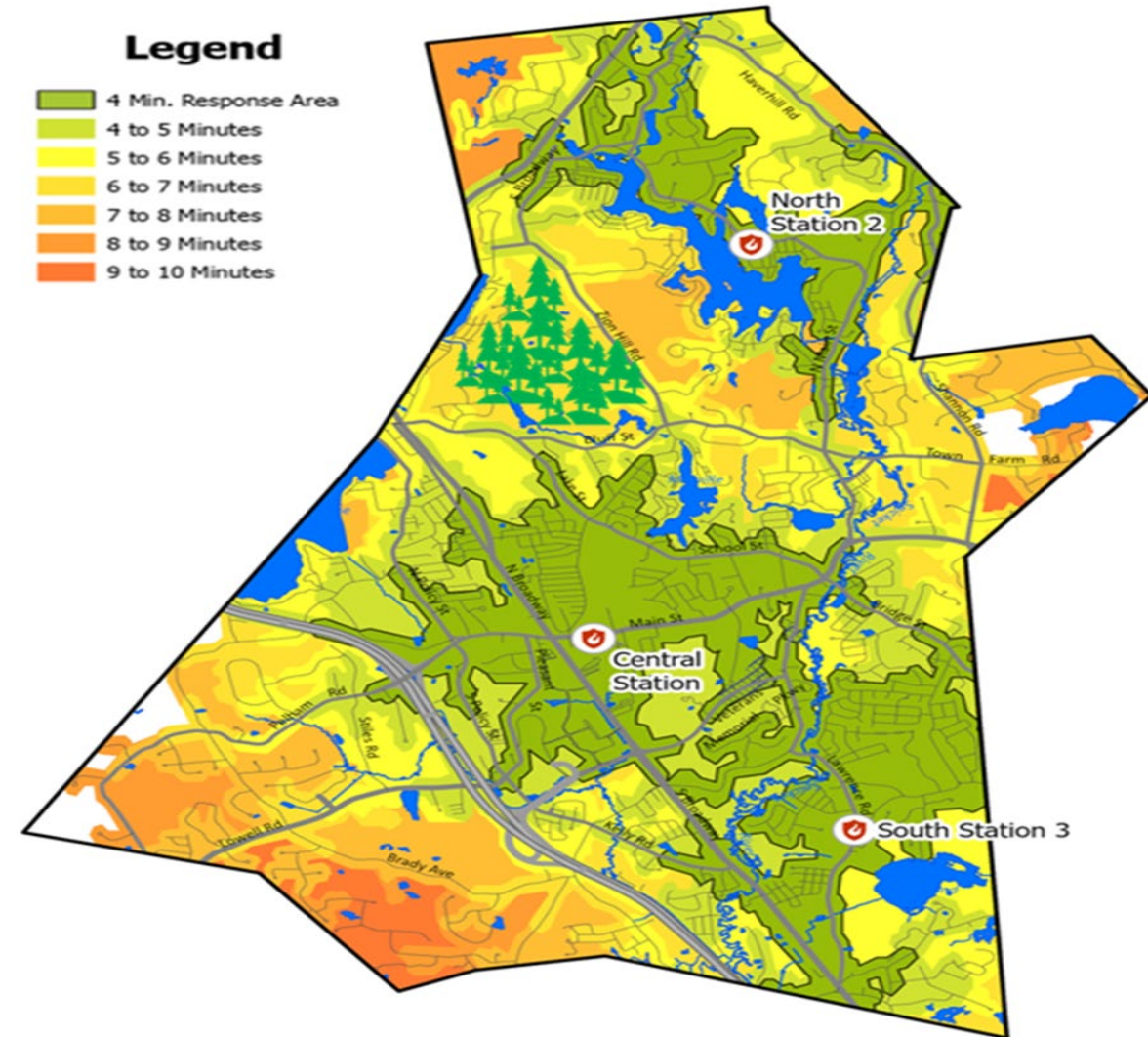
# This new Station will improve fire and emergency medical response times for the West-side of the Community



## Legend



## Legend





# SALEM FIRE DEPARTMENT

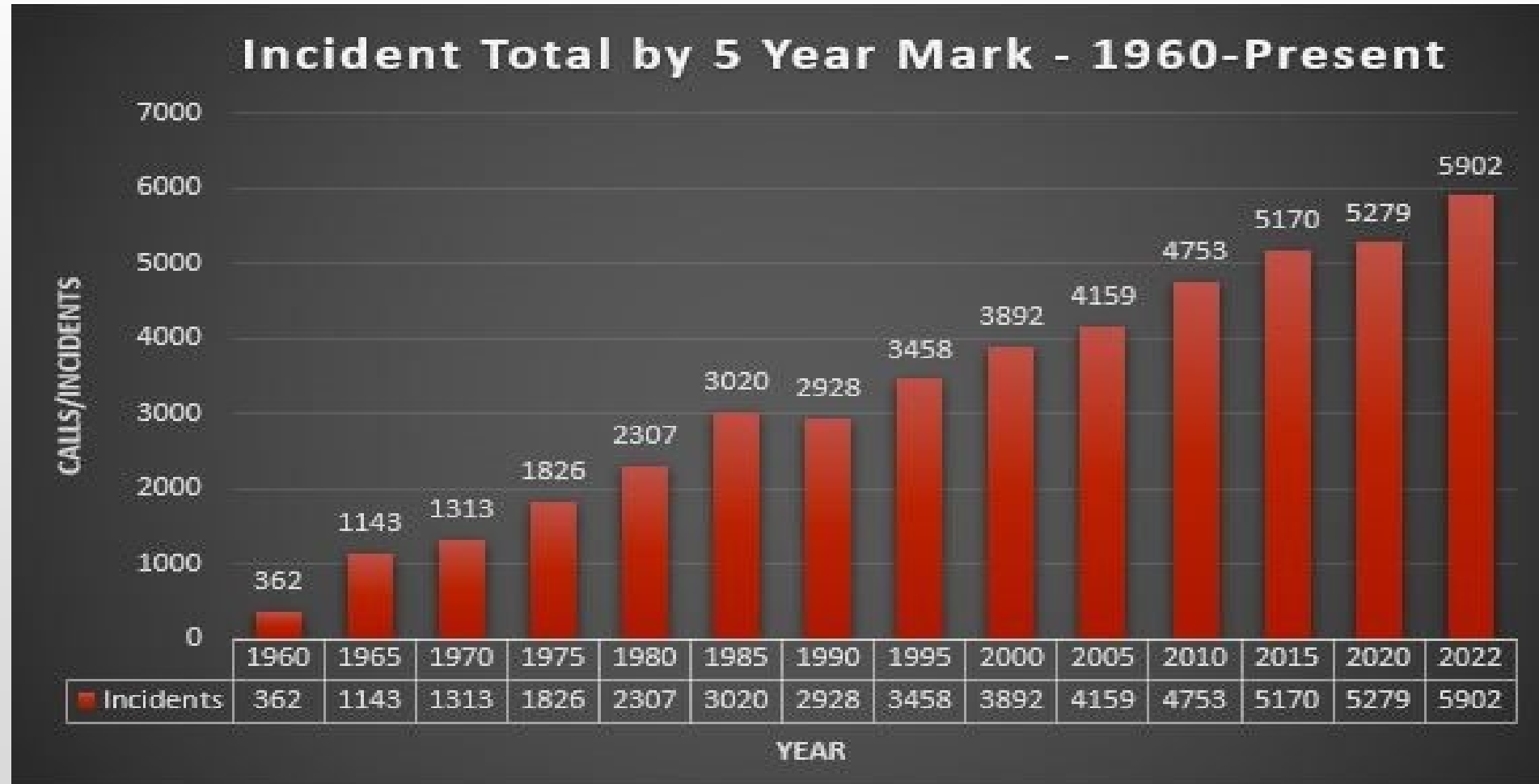
**“We’re here to help”**



# Questions?



# Additional Data & Information



# Additional Data & Information



2022 = 1,103

2021 = 981

# Additional Data & Information



2022 = 215

2021 = 120

# Additional Data & Information

## **Budget is Broken Down Into:**

- Administration = \$1,192,760
- Suppression (Operations) = \$12,261,711
  - Communications = \$877,075
    - Stations = \$365,926
- Inspectional Services = \$909,180



# Additional Data & Information

## **Revenue Estimates for 2022 (Nov.):**

- Ambulance Billing = \$985,274
- Fire Alarm Monitoring Fees = \$116,055
  - Fire Permits = \$73,233
  - CPR Training = \$1,180
  - Other FD Income = \$3,756
- Building Permits = \$2,010,087
- Electrical Permits = \$231,961
- Plumbing Permits = \$121,115
- Other Inspection Permits = \$131,615
  - Food Service License = \$54,280
  - Tattoo Parlor License = \$4,550
    - Massage License = \$1,100
- Other Health Dept. Licenses = \$250
- Septic System Reviews = \$24,240